

# Atmel AVRISP STK500 USB ISP Programmer



## Introduction

AVRISP2.0 STK500 programmer communicates with PC via USB port, and it works with most of PC & notebook computers.

**Note:** It is chinese version with PL2303(USB to Serial).

## Features

- It can supports a wide range of ATMEL AVR microcontrollor.
- It can works with [AVR Studio](#) or [WINAVR](#)(GCC)
- It works with [ATMEL AVR Studio 4.13](#), you can upgraded it's firmware,in upgrade firmware Completed,it can work at a higher version of the AVR Studio and to be able to support more device,
- Compact Size - 75mm x 57mm x 27mm

## Application Ideas

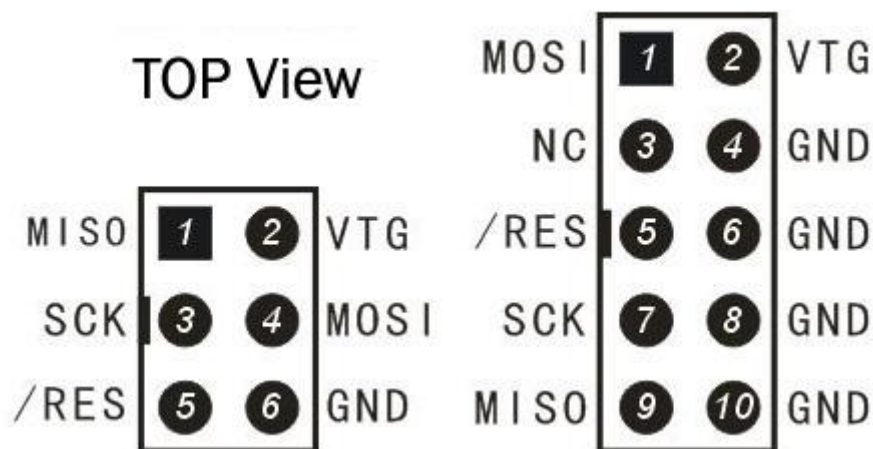
- AVR programming
- AVR Burn Bootloader

## Supported Devices

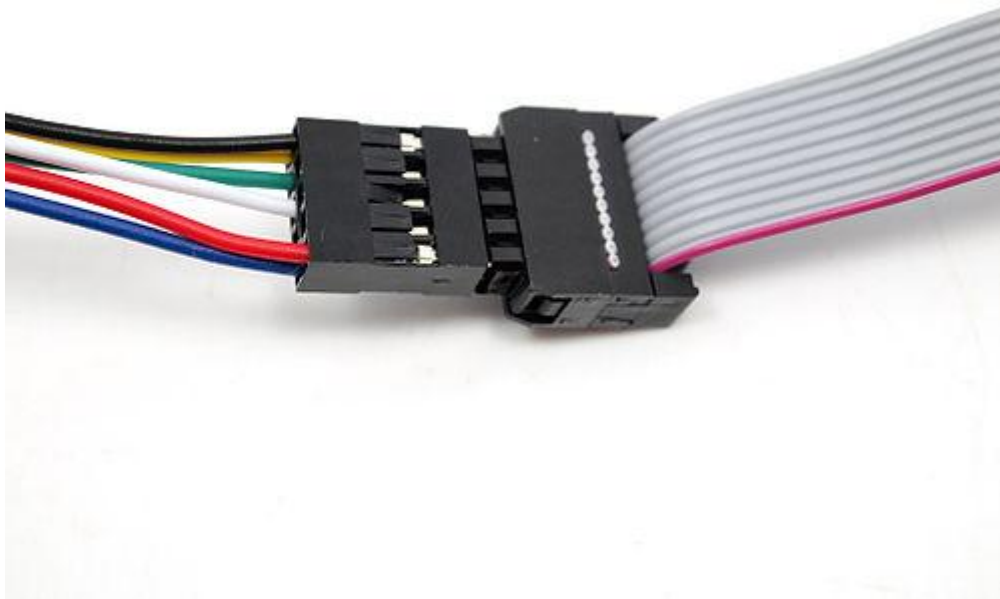
AT90S1200	AT90S2313	AT90S2323	AT90S2343
AT90S4433	AT90S8515	AT90S8535	ATmega128

ATmega1280	ATmega1281	ATmega128RZAV	ATmega128RZBV
ATmega16	ATmega161	ATmega162	ATmega163
ATmega164P	ATmega164P Automotive	ATmega165	ATmega168
ATmega168 Automotive	ATmega168P	ATmega169	ATmega16A
ATmega16U4	ATmega2560	ATmega2561	ATmega256RZAV
ATmega256RZBV	ATmega32	ATmega323	ATmega324P
ATmega324P automotive	ATmega325	ATmega3250	ATmega3250P
ATmega325P	ATmega328P	ATmega329	ATmega3290
ATmega3290P	ATmega329P	ATmega32A	ATmega32U4
ATmega48	ATmega48 Automotive	ATmega48P	ATmega64
ATmega640	ATmega644	ATmega644P	ATmega644P Automotive
ATmega645	ATmega6450	ATmega649	ATmega6490
ATmega8535	ATmega88	ATmega88 Automotive	ATmega88P
ATtiny12	ATtiny13	ATtiny13A	ATtiny15L
ATtiny2313	ATtiny26	ATtiny88	

## Wire Interface



## Usage



### Example: Burn Bootloader to Arduino UNO

1. How to connect : See the picture above
2. Install AVRISP driver in the CD .
3. Download AVR STUDIO4.19 and install it.

**Caution : The AVR STUDIO4.13 software in the CD can no support ATmega328P.**

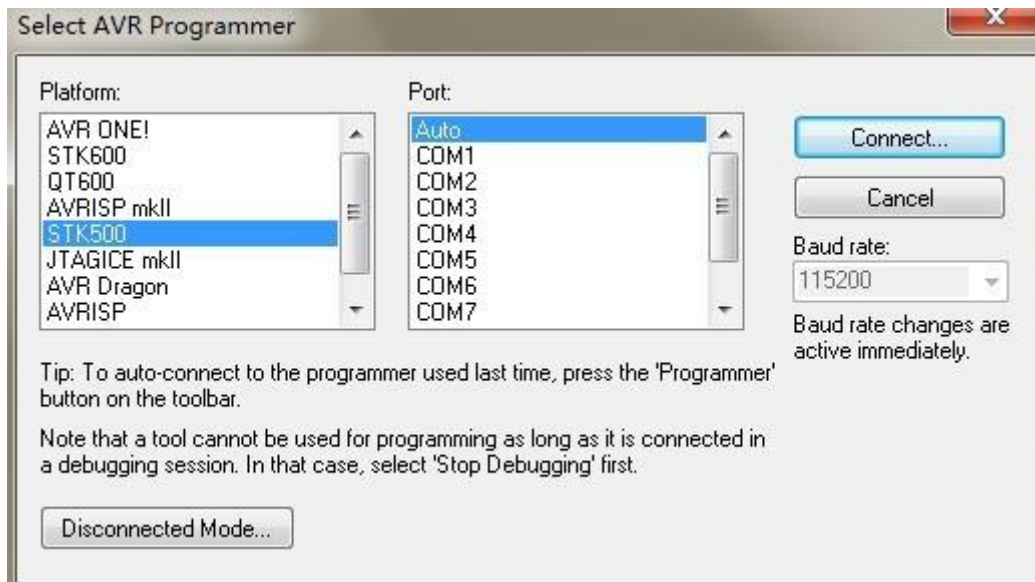
4. Burn Bootloader to Arduino UNO

-> Open AVR STUDIO4.19

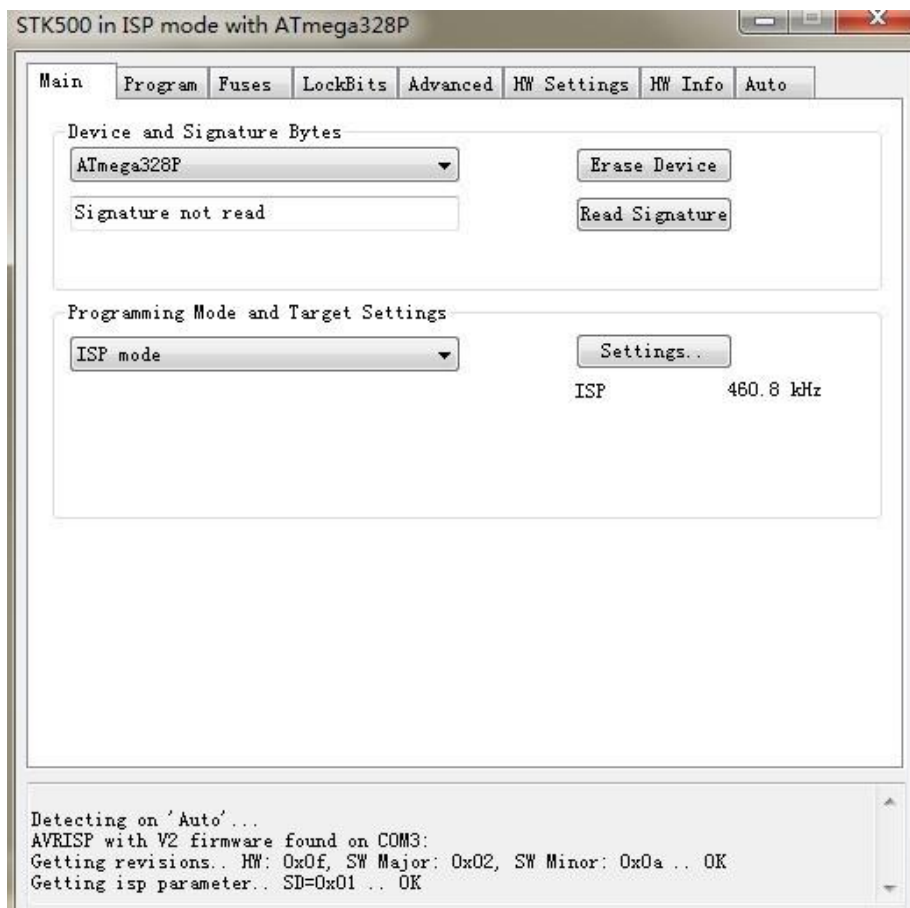
-> Connect to STK500



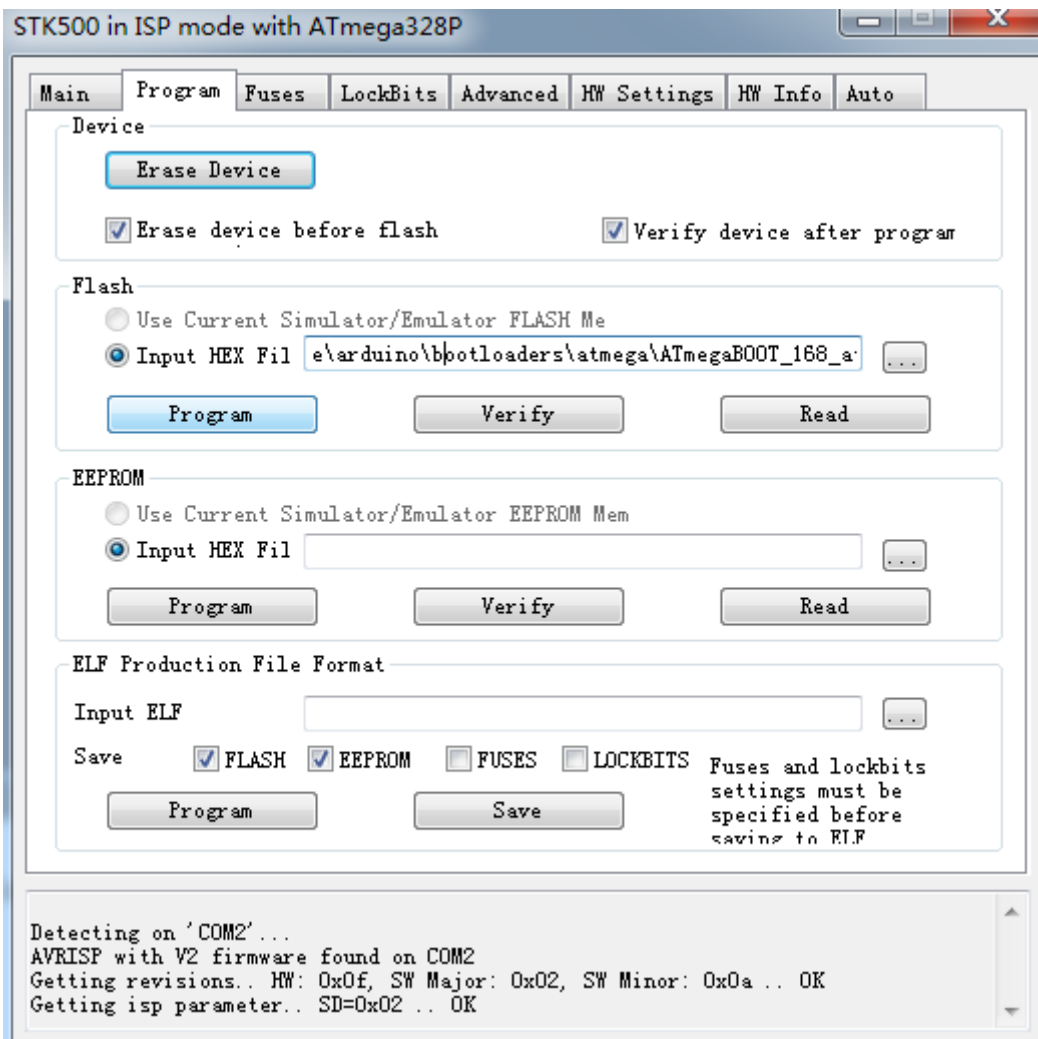
->Select Platform



->Select Device "ATmega328P"



->Select Bootloader > Path:\arduino-1.0\hardware\arduino\bootloaders\optiboot\optiboot\_atmega328.hex



->Program

## FAQ

Please list your question here:

1. Can this be used for programming and debugging an AVR32 chip?

## Resources

- [USB driver for WinXP and VISTA](#)
- [pl-2303hx-drivers](#)
- [AVR Studio Download Link](#)