



CATALOGUE

PM STEPPING MOTOR PM STEPPING GEARMOTOR

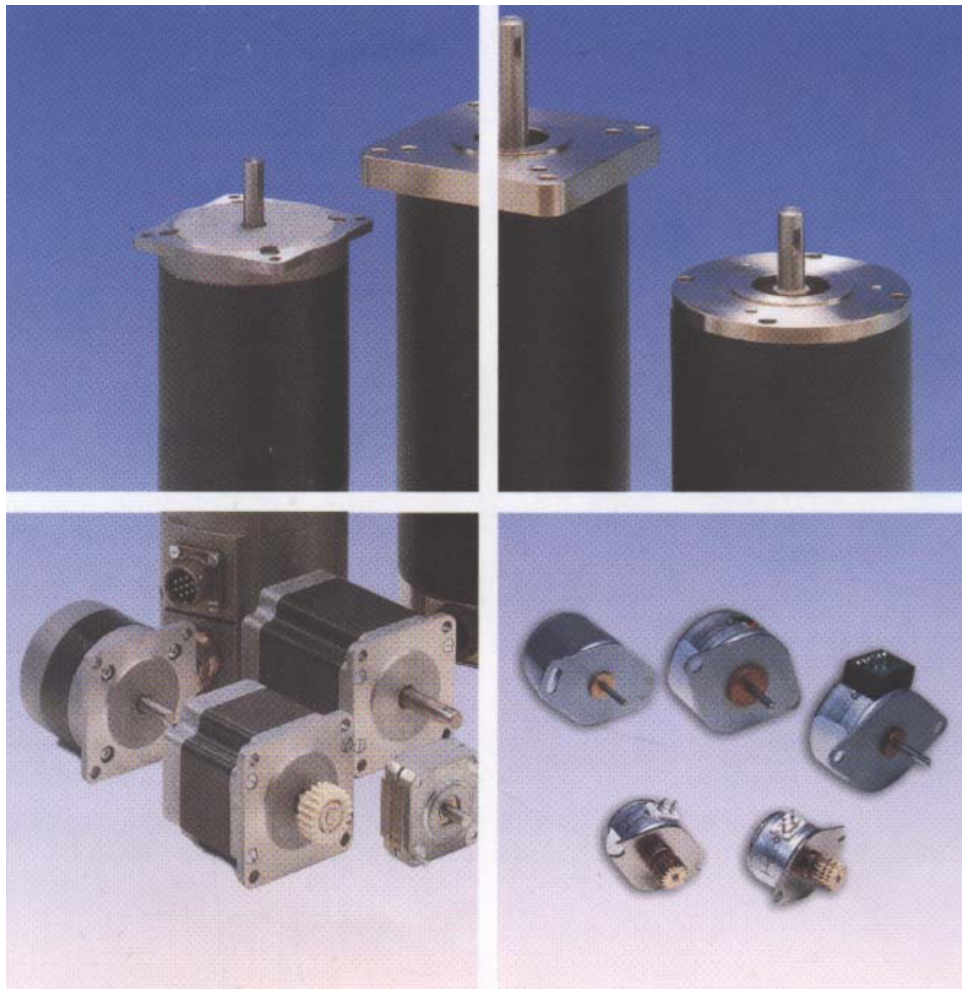


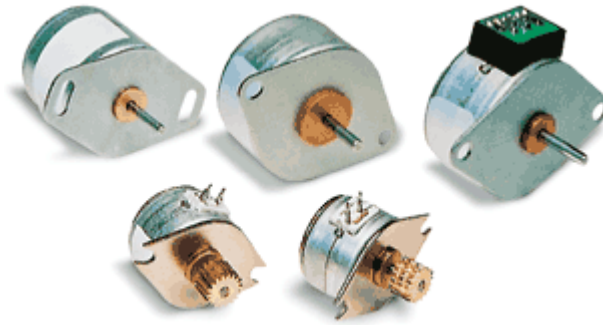


TABLE OF CONTENTS

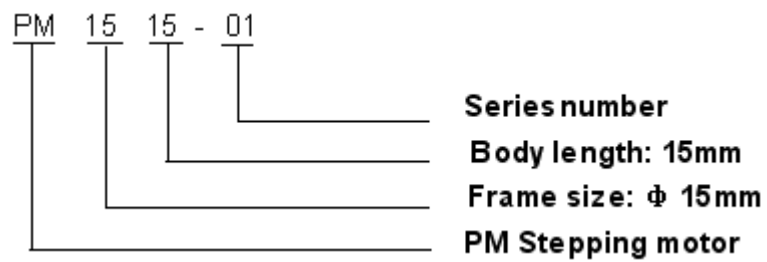
General Information, Marking	3
PM15/20/25 stepping motors	4
PM35/42/49/57 stepping motors	8
PMG25/35 stepping motors	15
GD42BY/40JB4K PM stepping gearmotors	18
GD20/24/28/30/35BYJ PM stepping gearmotors	20
GD15/20/25/35/42/57BYT PM stepping motors	23
GD25BYZ linear PM stepping motors	26
GD35/57BYZ linear PM stepping motors	28
Order & Contact Info	31



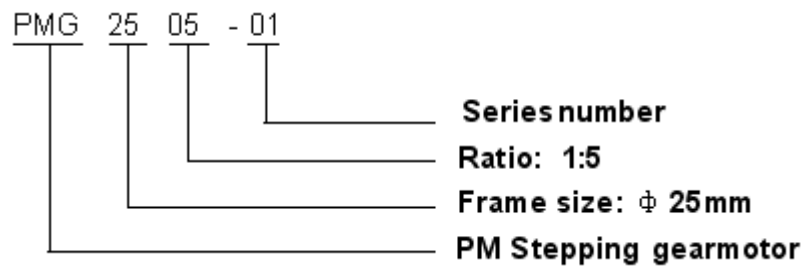
PM STEPPING MOTOR & PM STEPPING GEARMOTOR



PRODUCT NUMBER CODE FOR PM STEPPING MOTOR



PRODUCT NUMBER CODE FOR PM STEPPING GEARMOTOR





PM15/20/25 STEPPING MOTORS

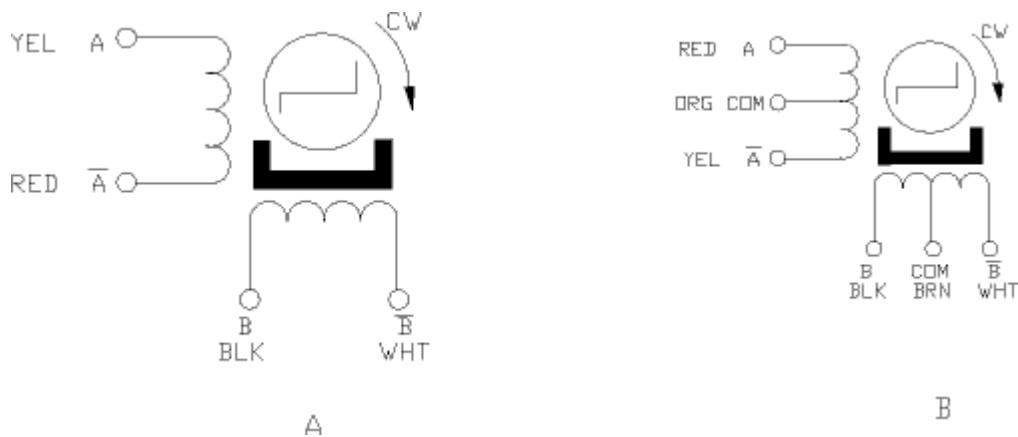
GENERAL SPECIFICATION FOR PM STEPPING MOTOR

Item	Specifications
Step Angle Accuracy	±8% (full step, no load)
Resistance Accuracy	±10%
Inductance Accuracy	±20%
Temperature Rise	80°C Max (rated current, 2 phase on)
Ambient Temperature	-20°C ~ +50°C
Insulation Resistance	100MΩ Min, 500VDC
Dielectric Strength	500VAC for one minute
Shaft Radial Play	0.06Max (450 g-load)
Shaft Axial Play	0.08Max (450 g-load)

PM STEPPING MOTOR SPECIFICATIONS

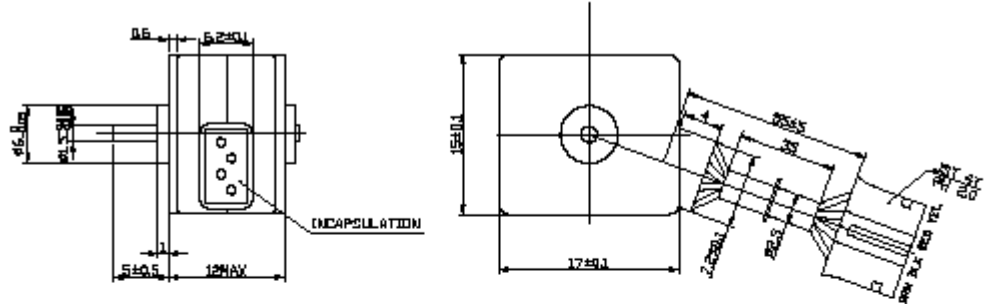
Model	Step Angle	No. of Phase	Voltage	Current /Phase	Resistance /Phase	Holding Torque	Detent Torque	Rotor Inertia	Wire Diagram
	deg.		V	A	Ω	g. cm	g.cm		kg
PM1512-01	18	2	12	0.04	300	40	10		A
PM1512-02	18	2	5	0.5	10	27	6		
PM1512-03	18	2	12	0.065	19	40	10		
PM2018-01	18	4	12	0.24	50	80	25		B
PM2018-02	18	2	5	0.5	10	60	20		A
PM2516-01	15	4	9	0.45	20	140	75		B
PM2516-02	15	4	12	0.4	30	130	75		B
PM2515-01	7.5	2	12	0.24	50	170	45		A
PM2515-02	7.5	4	12	0.25	50	160	35		B
PM2515-03	7.5	4	5	0.5	10	120	45		B
PM2515-04	7.5	2	5	0.5	10	110	40		A

WIRING DIAGRAM

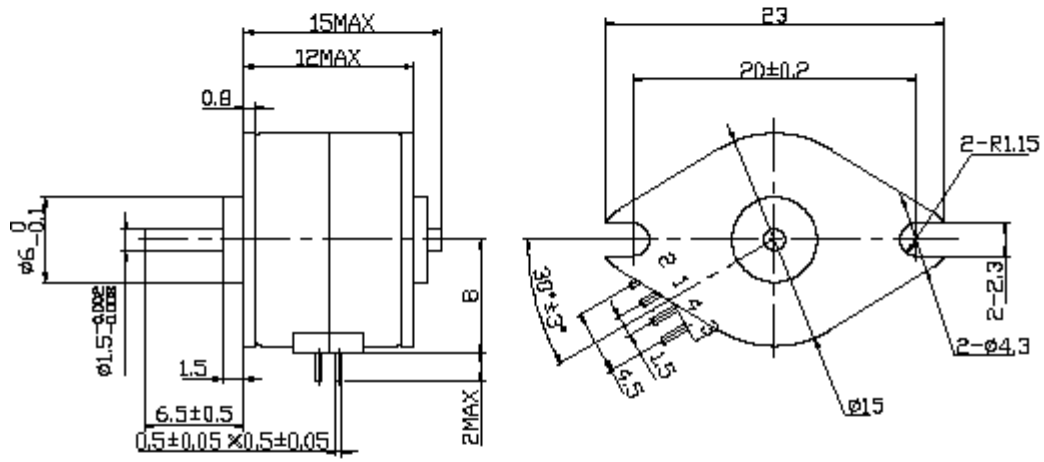


DIMENSIONS

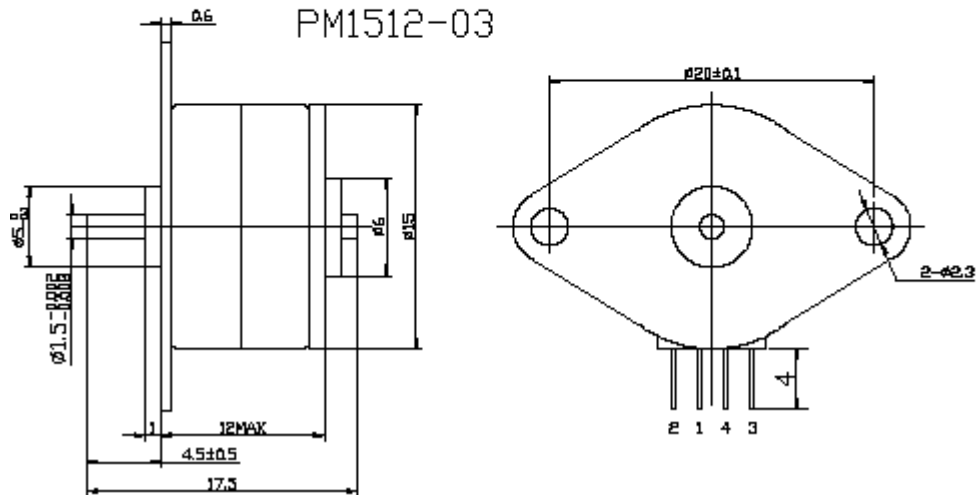
PM1512-01



PM1512-02

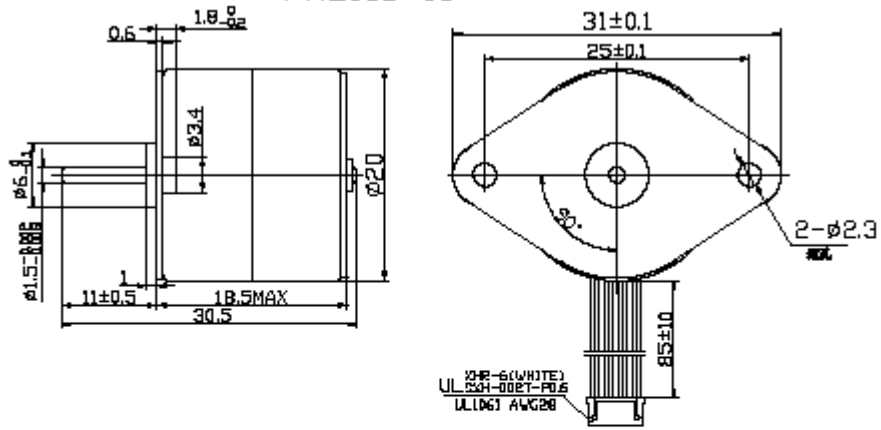


PM1512-03

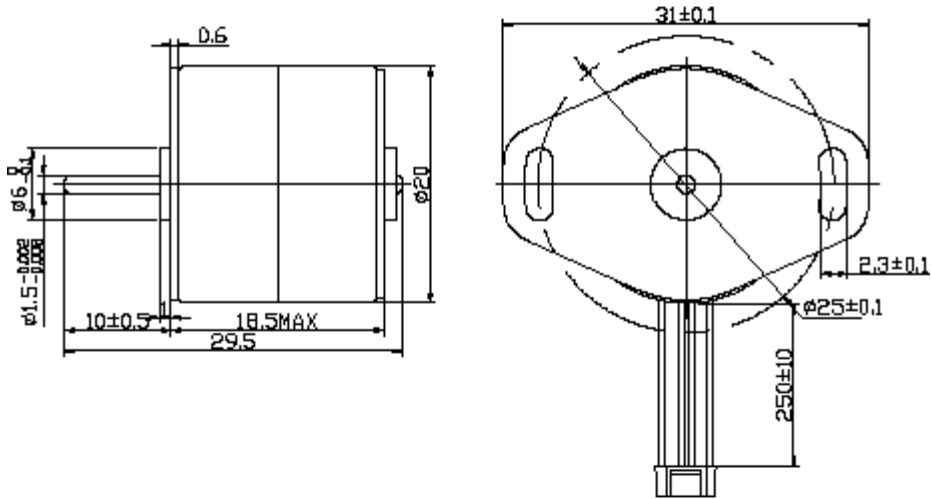


DIMENSIONS

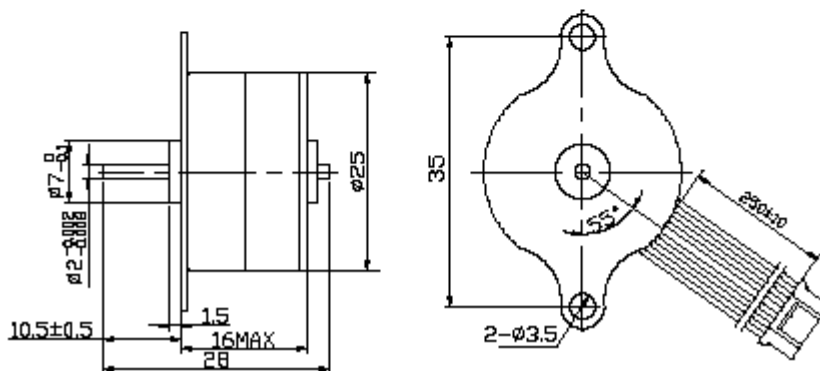
PM2018-01



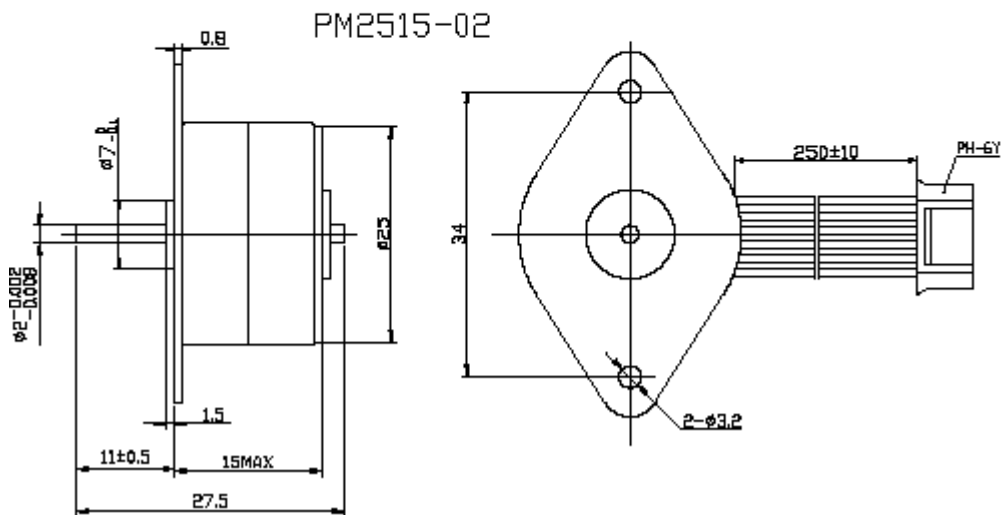
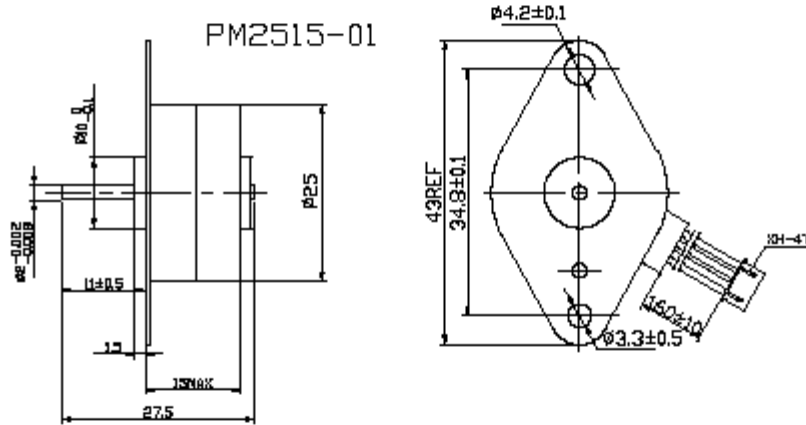
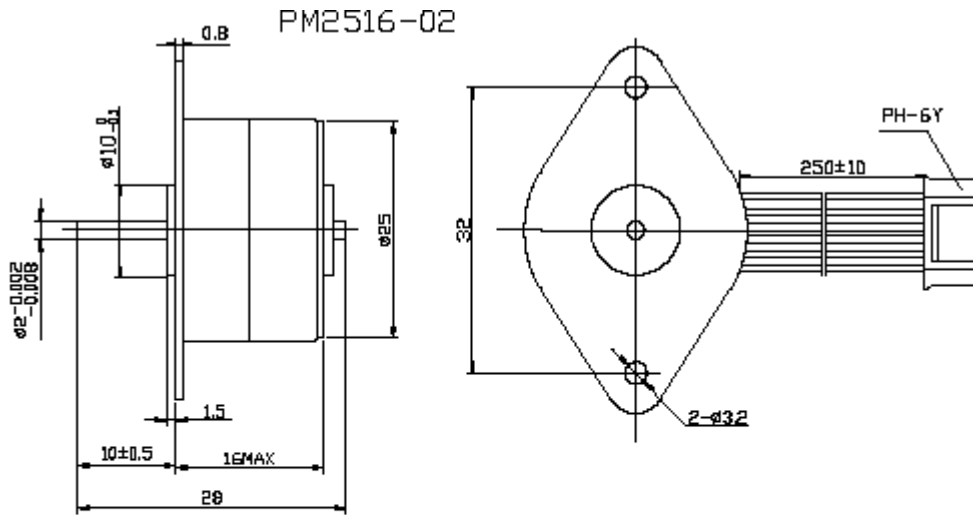
PM2018-02



PM2516-01



DIMENSIONS





PM35/42/49/57 STEPPING MOTORS

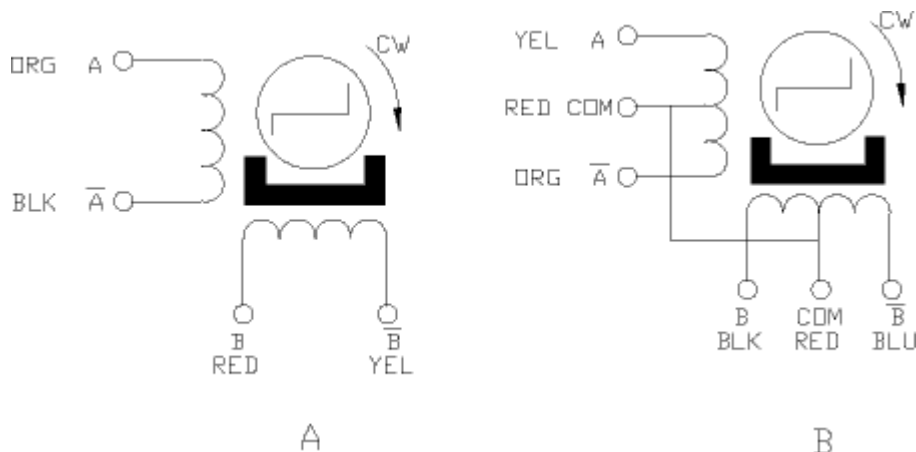
GENERAL SPECIFICATION FOR PM STEPPING MOTOR

Item	Specifications
Step Angle Accuracy	±8% (full step, no load)
Resistance Accuracy	±10%
Inductance Accuracy	±20%
Temperature Rise	80°C Max (rated current, 2 phase on)
Ambient Temperature	-20°C ~ +50°C
Insulation Resistance	100MΩ Min, 500VDC
Dielectric Strength	500VAC for one minute
Shaft Radial Play	0.06Max (450 g-load)
Shaft Axial Play	0.08Max (450 g-load)

PM STEPPING MOTOR SPECIFICATIONS

Model	Step Angle	No. of Phase	Voltage	Current /Phase	Resistance /Phase	Holding Torque	Detent Torque	Rotor Inertia	Wire Diagram
	deg.								kg
PM3522-01A	15	2	5	0.46	11	335	125	7.5	A
PM3522-02A	15	4	5	0.46	11	300			B
PM3522-01B	7.5	4	5	0.862	5.8	550			A
PM3522-02B	7.5	2	5	0.5	10				B
PM3522-03B	7.5	2	12	0.2	608	300	65	A	
PM3516-01	7.5	4	12	0.255	47	350	75	B	
PM3516-02	7.5	2	5	0.42	12	800	210	A	
PM4222-01A	7.5	4	12	0.8	15	800	210	9.6	B
PM4222-02A	7.5	2	4.2	0.6	7	550	100		A
PM4222-01B	7.5	2	12	0.13	95	600	110	7.5	B
PM4222-02B	7.5	4	5	0.81	6.2	500	100		A
PM4217-01	7.5	4	12	0.24	50	600	90	9.6	B
PM4217-02	7.5	2	5	0.59	8.6	1700	350		A
PM4930-01	7.5	2	5	0.9	5.5	1500	425	<14.5	
PM5725-01	7.5	4	12	0.6	21	1200	425	<12.5	B
PM5725-02	7.5	2	5.6	0.625	9				A

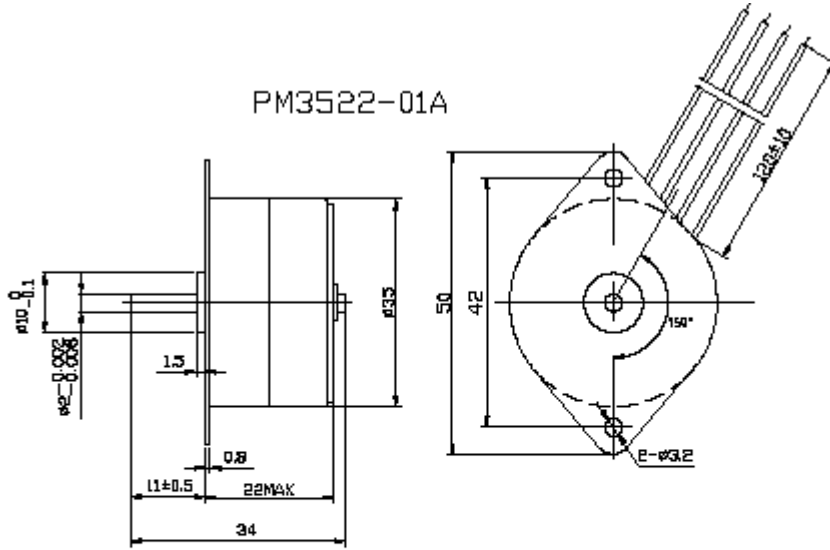
WIRING DIAGRAM



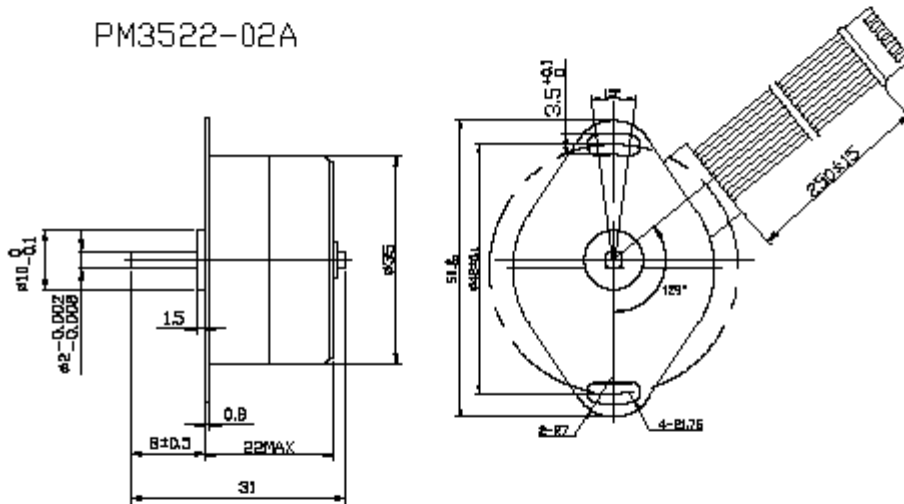


DIMENSIONS

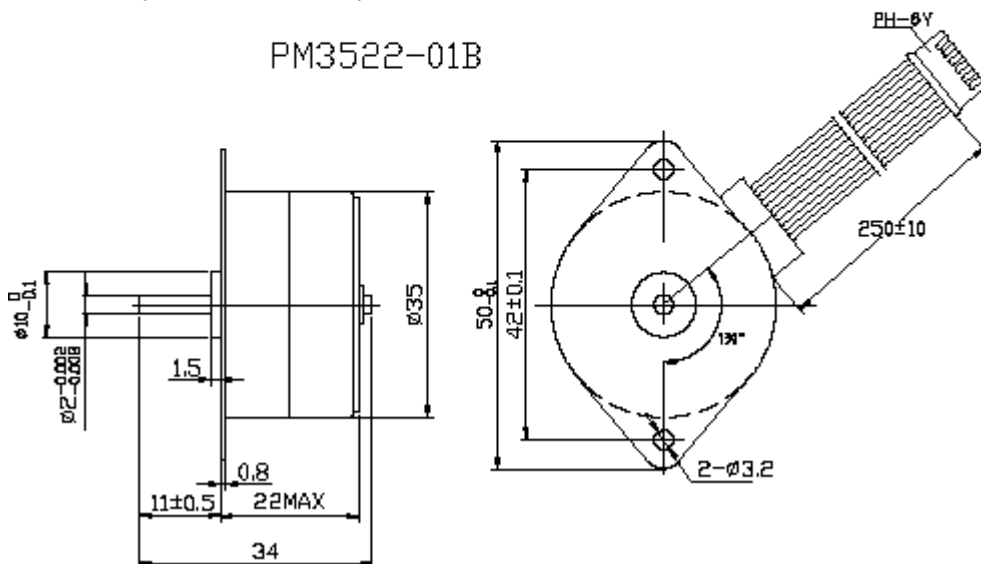
PM3522-01A



PM3522-02A

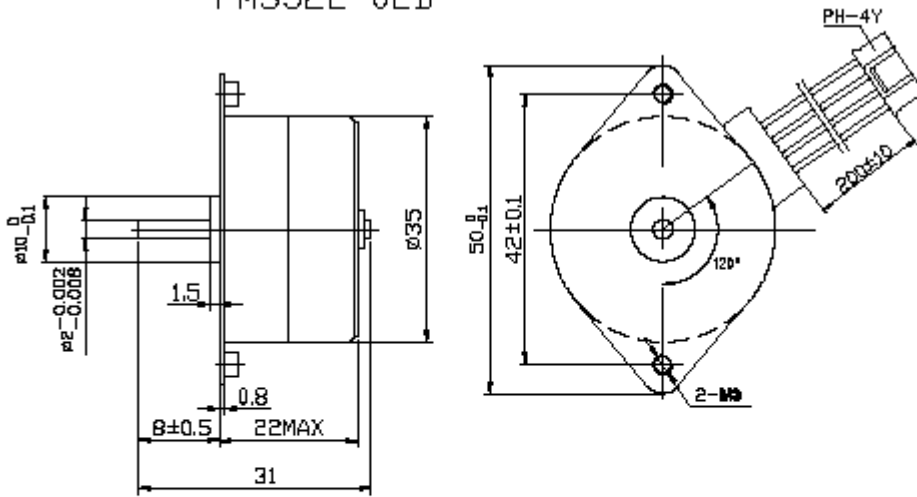


PM3522-01B

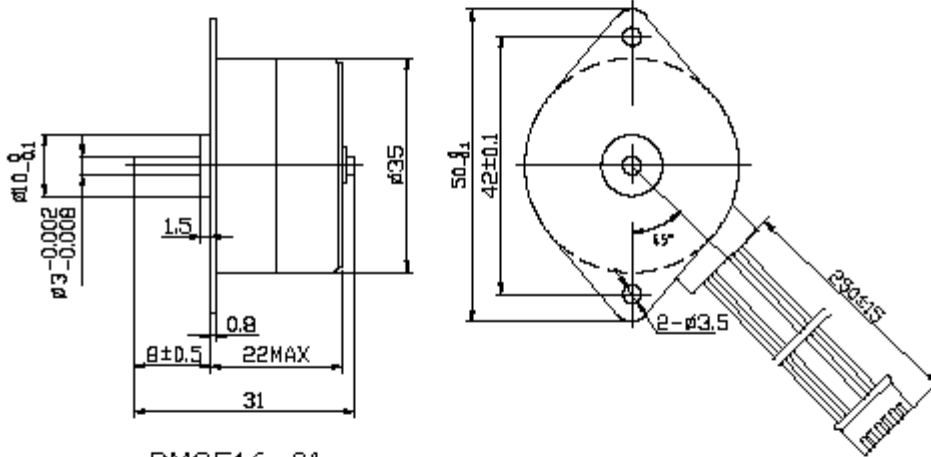


DIMENSIONS

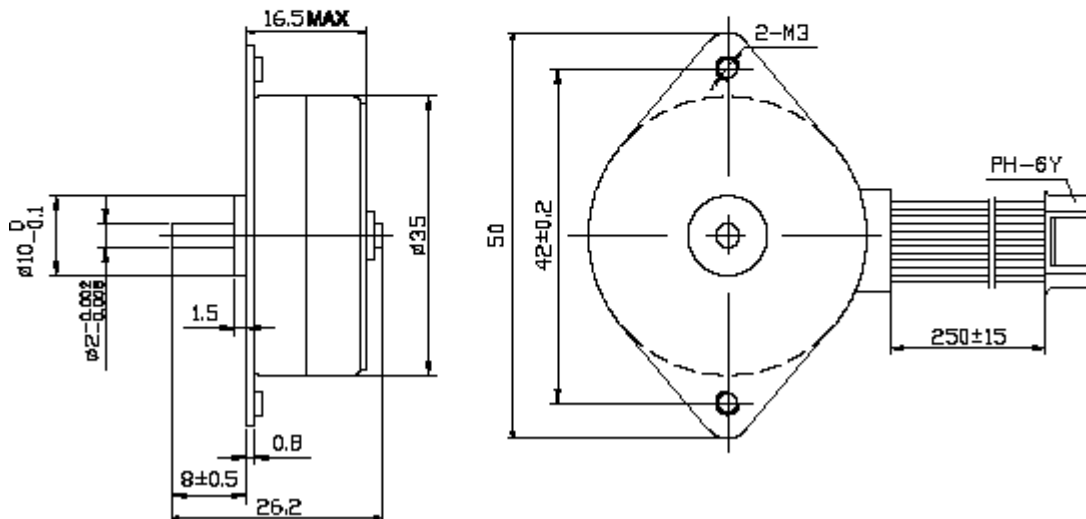
PM3522-02B



PM3522-03B



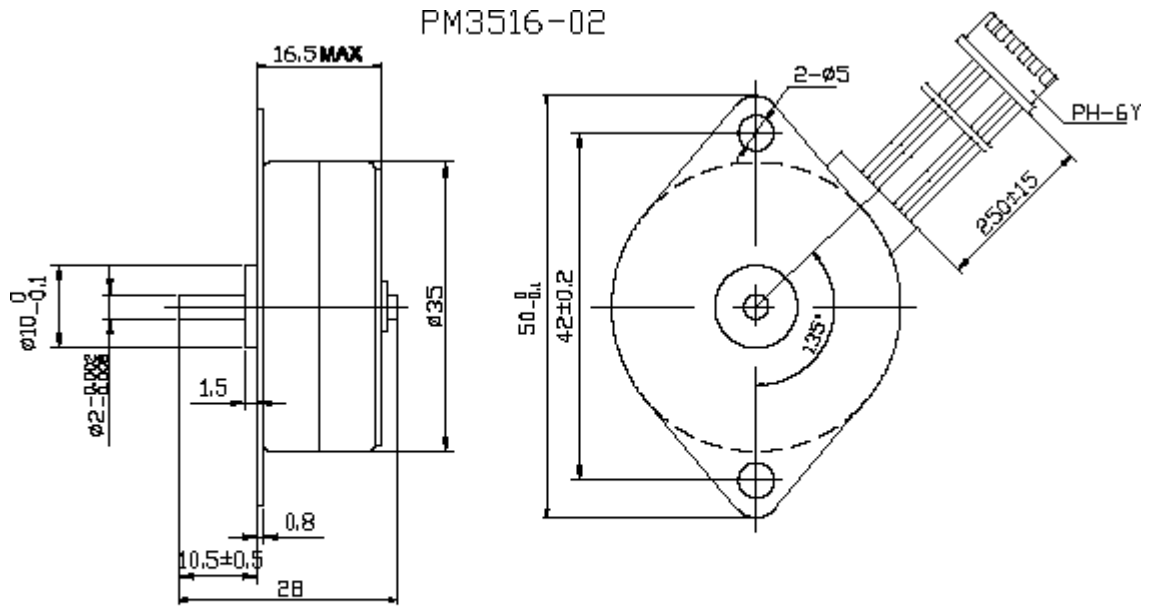
PM3516-01



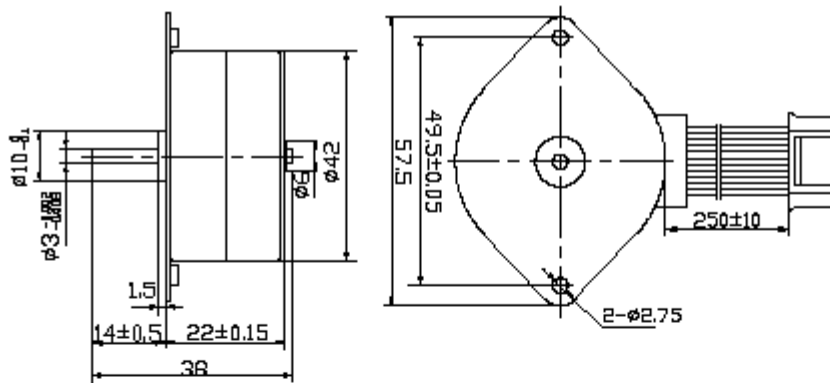


DIMENSIONS

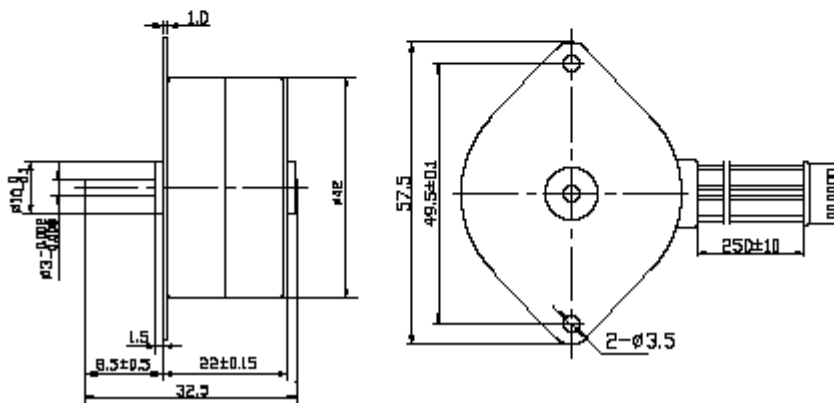
PM3516-02



PM4222-01A

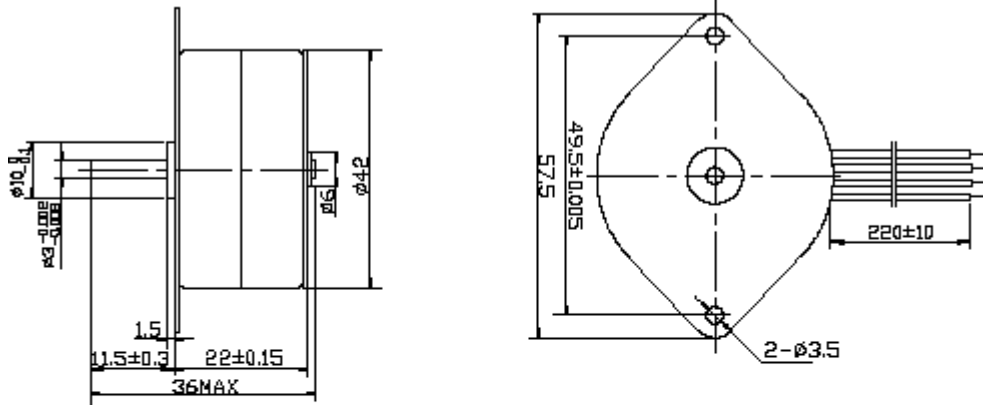


PM4222-02A

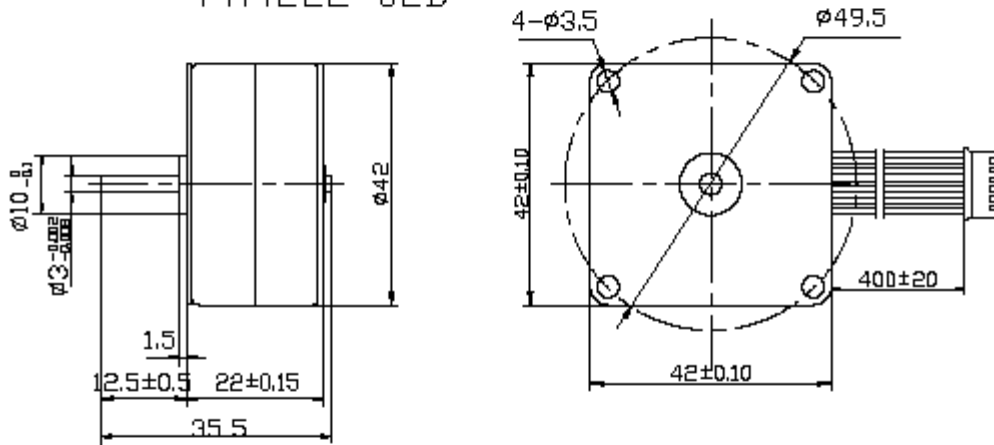


DIMENSIONS

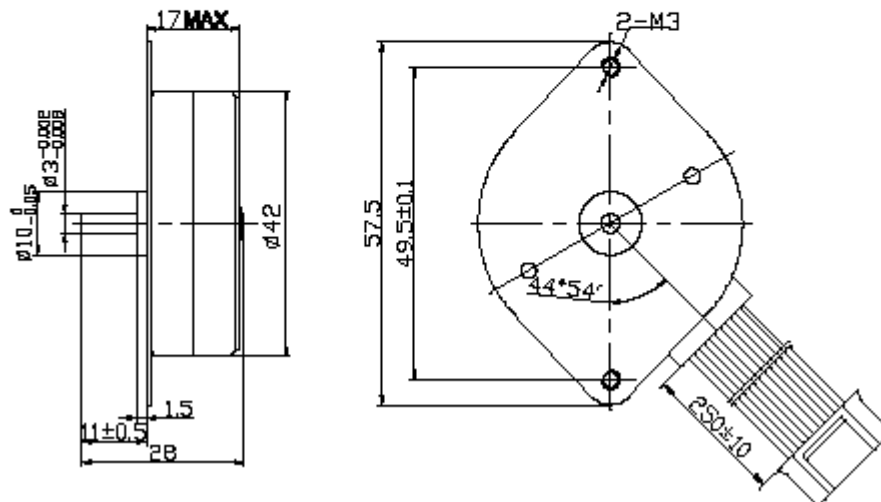
PM4222-01B



PM4222-02B

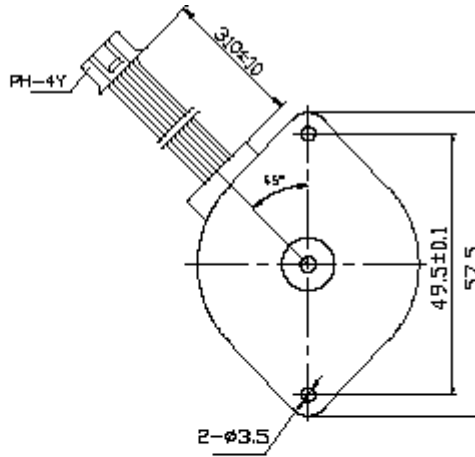
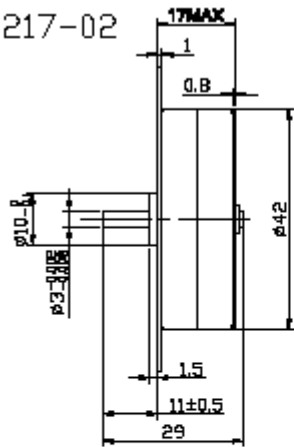


PM4217-01

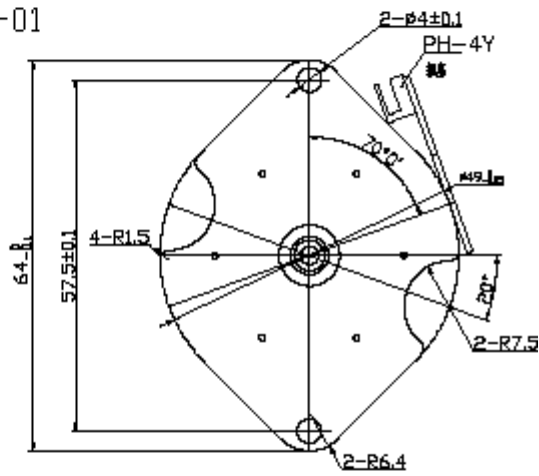
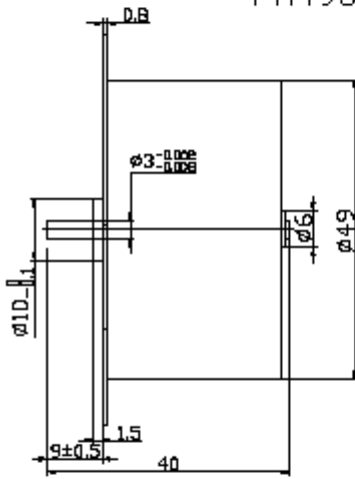


DIMENSIONS

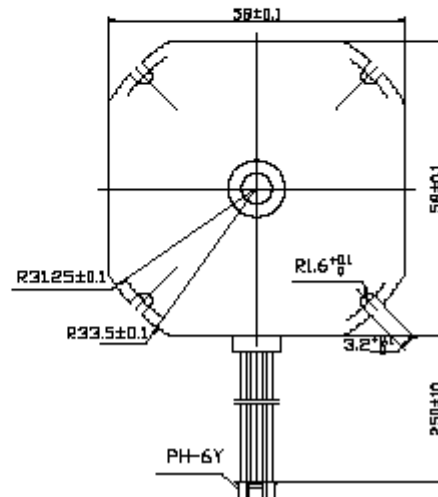
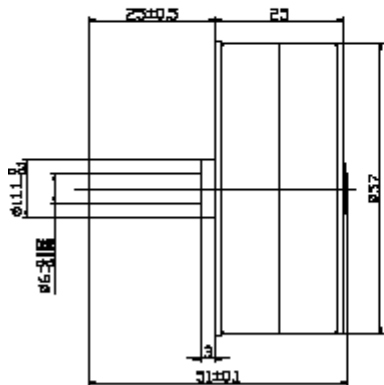
PM4217-02



PM4930-01



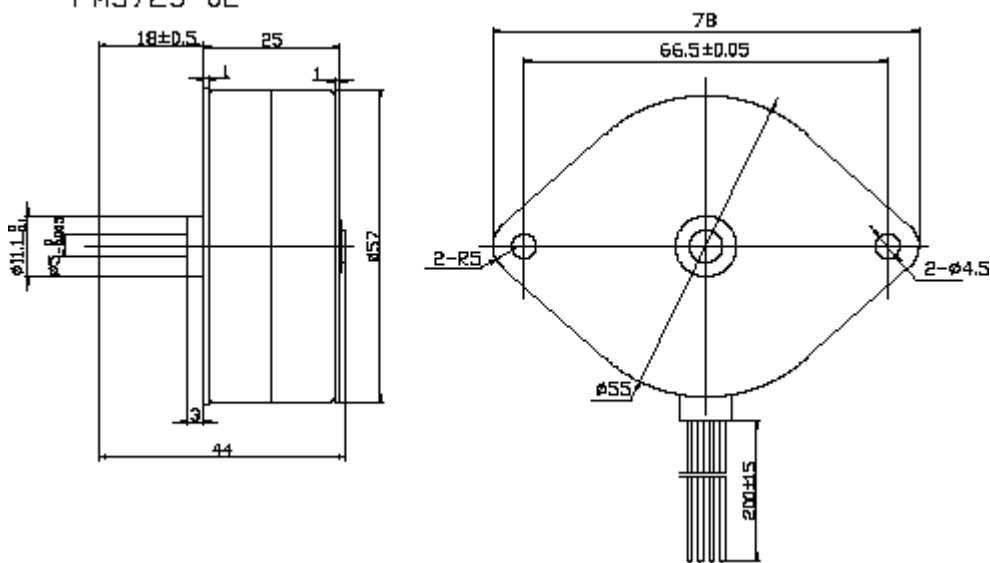
PM5725-01





DIMENSIONS

PM5725-02





PMG25/35 STEPPING MOTORS

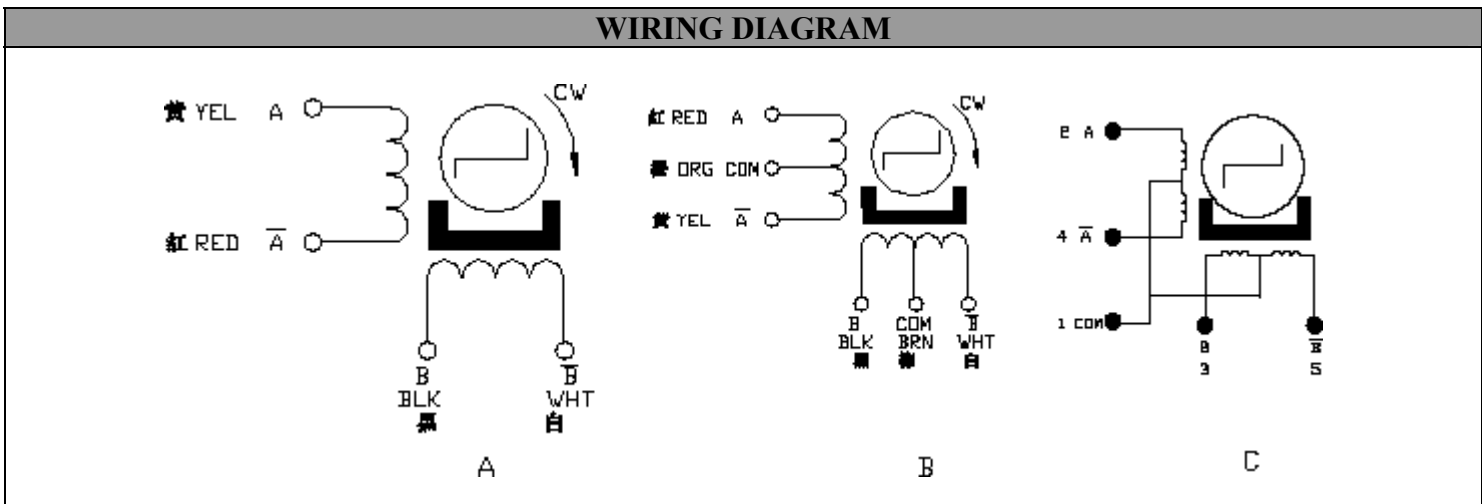
GENERAL SPECIFICATION FOR PM STEPPING MOTOR

Item	Specifications
Step Angle Accuracy	±7% (full step, no load)
Resistance Accuracy	±10%
Temperature Rise	80°C Max ambient temperature 40°C
Ambient Temperature	-20°C ~ +50°C
Insulation Resistance	100MΩ Min, 500VDC
Dielectric Strength	650VAC for one second, leakage current 1mA

PM STEPPING MOTOR SPECIFICATIONS

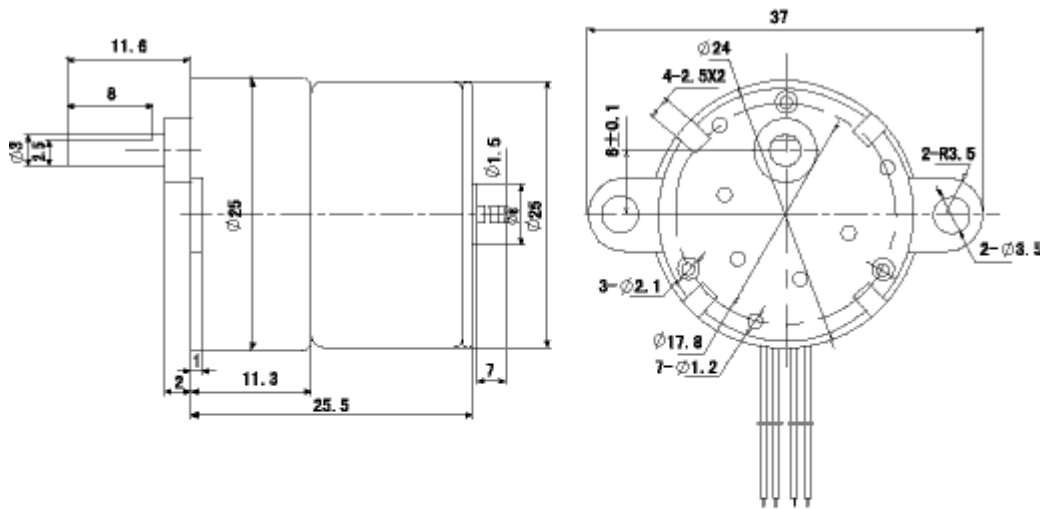
Model	Step Angle	No. of Phase	Voltage V	Current /Phase A	Resistance /Phase Ω	Holding Torque g. cm	Detent Torque g.cm	Ratio	Wire Diagram
	deg.								kg
PMG2505-01	7.5/5	2	2.6	0.52	5	450	<150	1:5	A
PMG2505-02	15/5	2	3.5	0.365	9.6	500	<150	1:5	
PM2510-01	7.5/10	2	2.8	0.467	6	1400	<500	1:10	
PM2530-01	7.5/30	4	13.3	0.11	120	4000	<1400	1:30	B
PMG3519-01	7.5/19	4	24	0.218	110	12000	<2280	1:19	C
PMG3519-02	7.5/19	4	12	0.4	30	10000	<2600	1:19	
PMG3508-01	7.5/8.4	4	12	0.4	30	1150	<500	1:8.4	
PMG3530-01	7.5/30	4	12	0.4	30	3000	<1500	1:30	
PMG3560-01	7.5/60	4	12	0.4	30	8000	<3000	1:60	
PMG35120-01	7.5/120	4	12	0.4	30	10000	<6000	1:120	

WIRING DIAGRAM

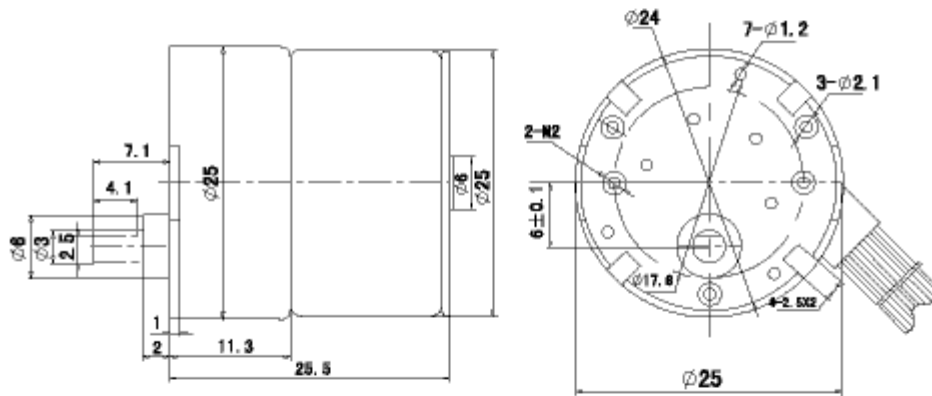


DIMENSIONS

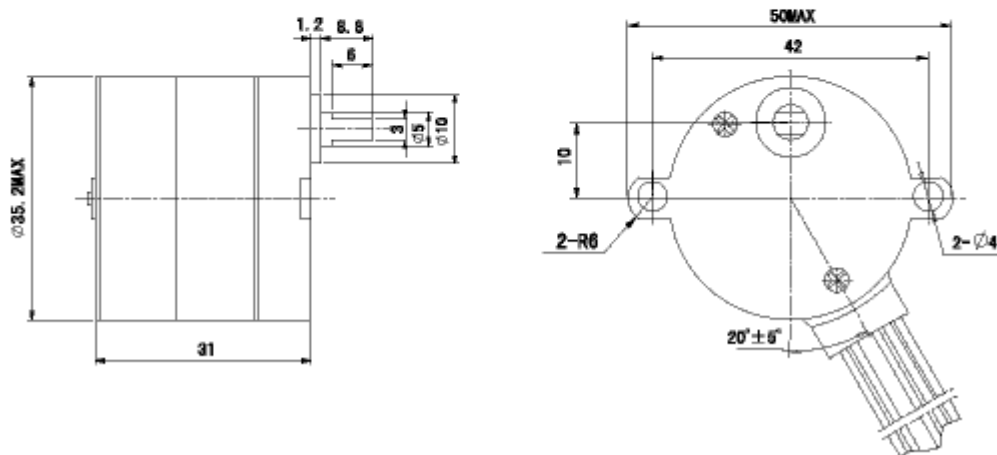
PM2505-01/02



PM2510-01



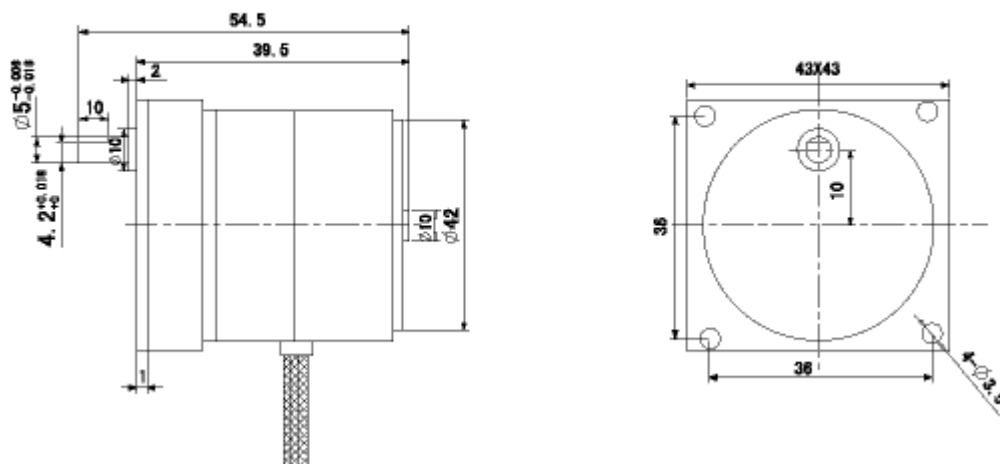
PM3519-01





DIMENSIONS

PM4210/50/150-01





GD42BY/40JB4K PM STEPPING GEARMOTORS

INDICATIONS OF THE MODEL

TYPE OF MOTOR			TYPE OF GEAR		
GD42	BY	06	40JB	4K	120
Frame	Sort	Voltage	Type of reducer	Max. load	Ratio
42mm		06:6 V 12:12 V 24:24 V	40mm	4 kg.cm	1:120

MOTOR TECHNICAL DATA

Model	Number of phase	Manner of distribution	Stepping angle	Phase resistance	Eliciting voltage	No-load static frequency	No-toad operating frequency	Rated starting torque	Static phase current
			deg.	Ω	V	PPS	PPS	g.cm/PPS	mA
GD42BY06	4	2-2	7.5	20±10%	6	450	480	50/300	300
GD42BY12	4	2-2	7.5	30±10%	12	300	350	140/300	400
GD42BY24	4	2-2	7.5	200±10%	24	420	330	160/200	126
GD42BY24	4	2-2	7.5	150±10%	24	500	330	180/200	160

PERMISSIBLE LOAD OF GEARMOTOR

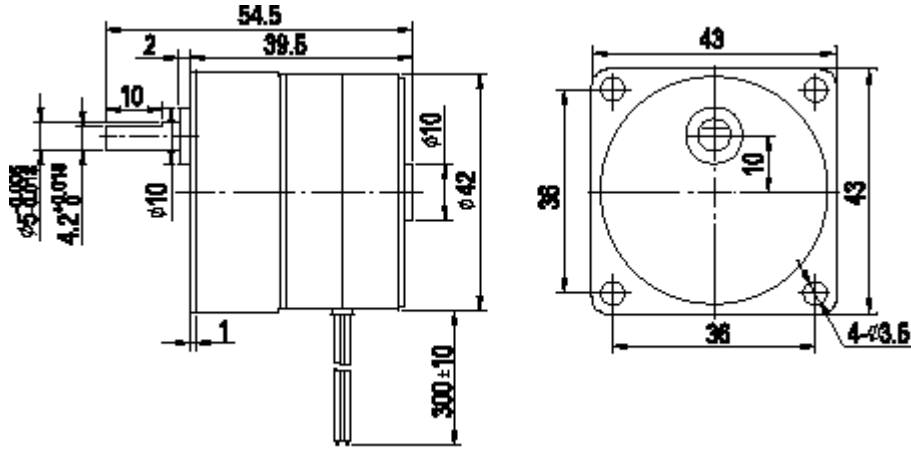
GD42BY06/40JB4K(20 Ω)									
Reduction ratio	10	25	30	50	75	100	120	150	
Number of gear trains	2	3	3	4	4	5	5	5	
Rated starting torque kg.cm/PPS	0.4/300	0.91/300	1.1/300	1.6/300	2.5/300	3.0/300	3.5/300	4.G/300	
Stepping angle deg.	0.75	0.3	0.25	0.15	0.1	0.075	0.0625	0.05	
Max. gear head load kg.cm	1.5	2	2	3	3	4	4	4	

GD42BY12/40JB4K(30 Ω)									
Reduction ratio	10	25	30	50	75	100	120	150	
Number of gear trains	2	3	3	4	4	5	5	5	
Rated starting torque kg.cm/PPS	1.1/300	2.5/300	3.1/300	4.0/300	4.0/300	4.0/300	4.0/300	4.G/300	
Stepping angle deg.	0.75	0.3	0.25	0.15	0.1	0.075	0.0625	0.05	
Max. gear head load kg.cm	1.5	2	2	3	3	4	4	4	

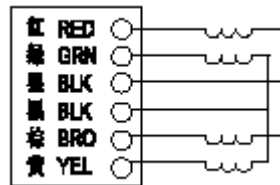
GD42BY24/40JB4K(200 Ω)									
Reduction ratio	10	25	30	50	75	100	120	150	
Number of gear trains	2	3	3	4	4	5	5	5	
Rated starting torque kg.cm/PPS	1.2/300	2.8/300	3.5/300	4.0/300	4.0/300	4.0/300	4.0/300	4.G/300	
Stepping angle deg.	0.75	0.3	0.25	0.15	0.1	0.075	0.0625	0.05	
Max. gear head load kg.cm	1.5	2	2	3	3	4	4	4	



DIMENSIONS



WIRING DIAGRAM





GD20/24/28/30/35BYJ PM STEPPING GEARMOTORS

INDICATIONS OF THE MODEL

GD35	BYJ	46	12	110
Frame	Sort	Step/Rev	Voltage	Resistance

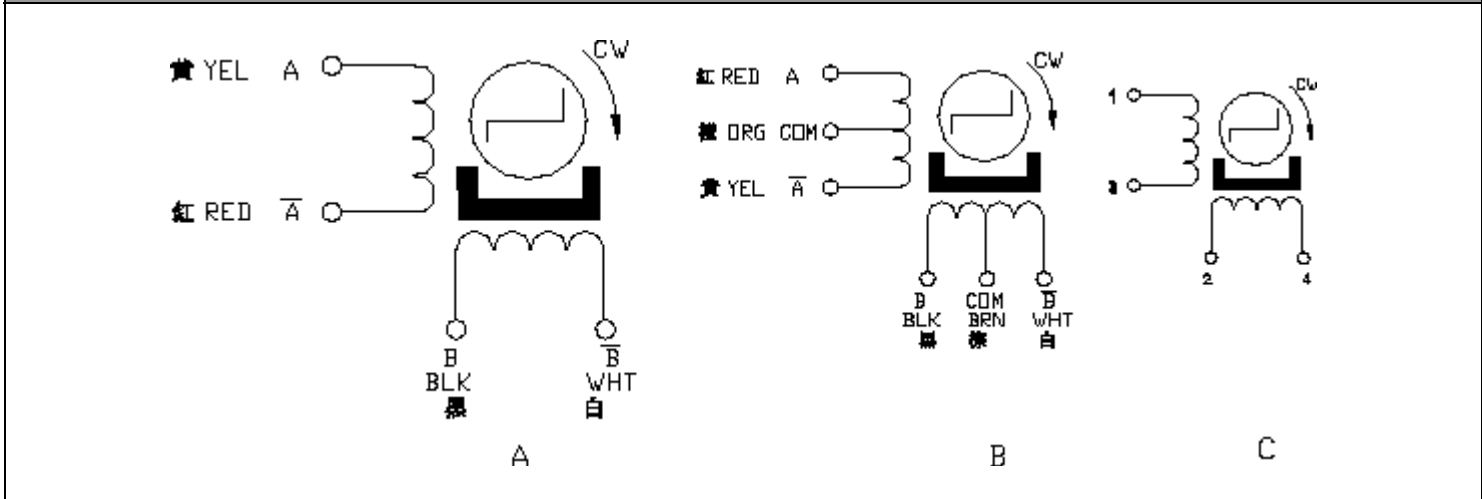
GENERAL SPECIFICATION FOR PM STEPPING MOTOR

Item	Specifications
Step Angle Accuracy	±7% AT 25°C
Temperature Rise	60k Max (rated voltage, 100pps)
Ambient Temperature	-20°C ~ +50°C
Insulation Resistance	100MΩ Min, 500VDC
Dielectric Strength	600VAC for one second, leakage current 1mA

PM STEPPING MOTOR SPECIFICATIONS

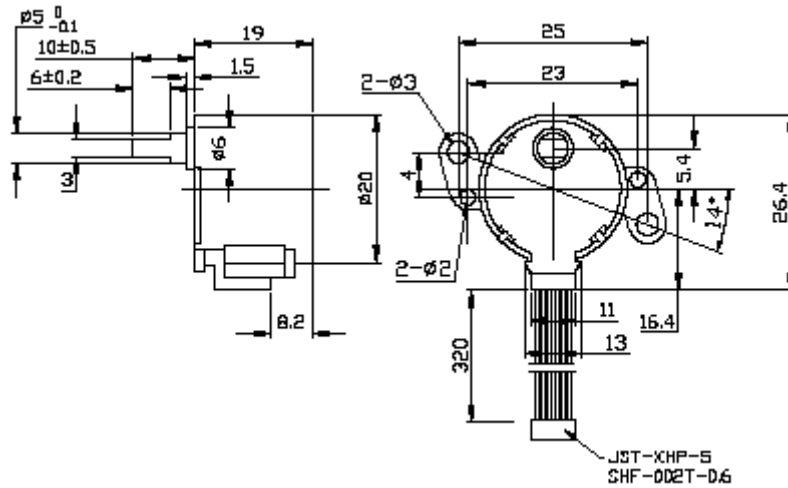
Model	Voltage	Phase	Resistance /phase	Step angle	Ratio	Pull-in torque at 100PPS	Pull-in rate	Detent torque	Wire Diagram
	V	N	Ω	Deg.		g. cm	PPS	g.cm	
GD20BYJ48-12-250	12	4	250	7.5/85	1:85	>340	>500	>200	C
GD24BYJ64-05-025	5	2	25	5.625/64	1:64	>300	>400	>300	A
GD28BYJ48-12-300	12	4	300	5.625/64	1:64	>300	>500	>200	C
GD30BYJ48-12-300	12	4	300	7.5/85.25	1:85.25	>400	>350	>400	C
GD35BYJ46-12-110	12	4	110	7.5/85.25	1:85.25	>1000	>500	>800	B

WIRING DIAGRAM

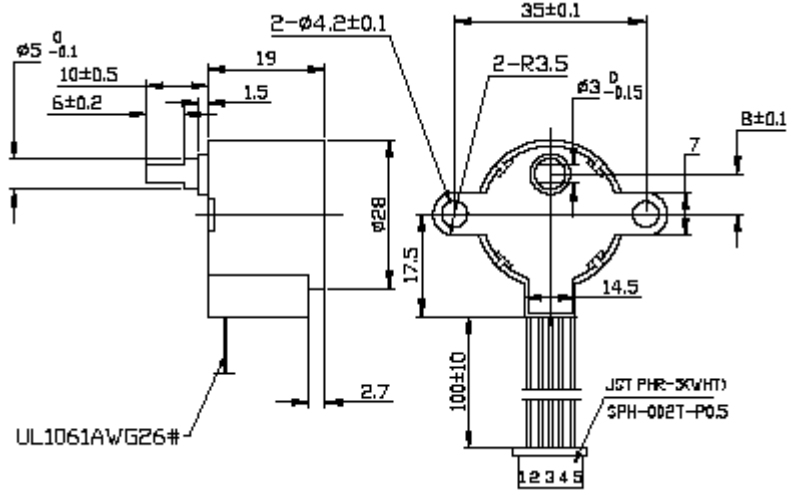




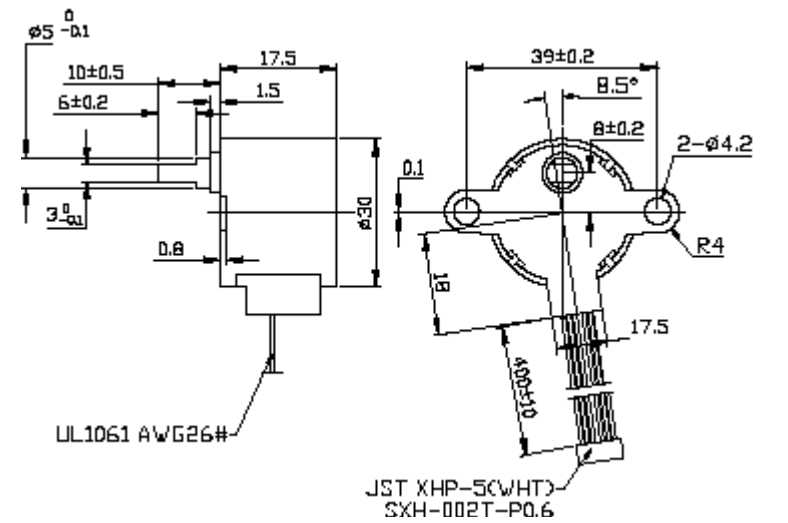
DIMENSIONS GD20BYJ48-12-250



DIMENSIONS GD24BYJ64-05-025

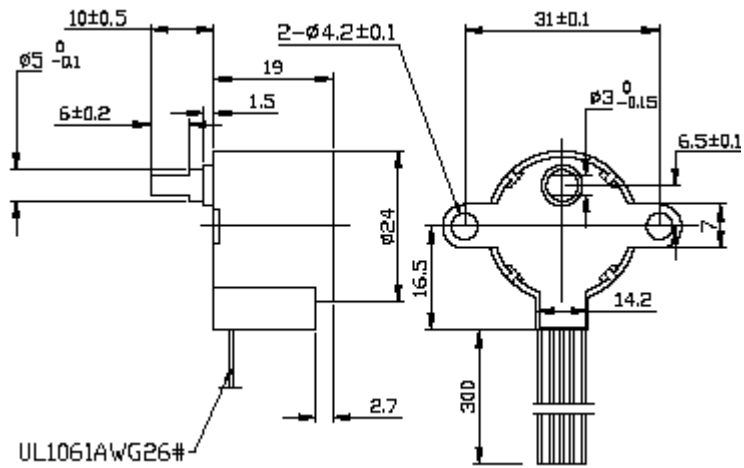


DIMENSIONS GD28BYJ48-12-300

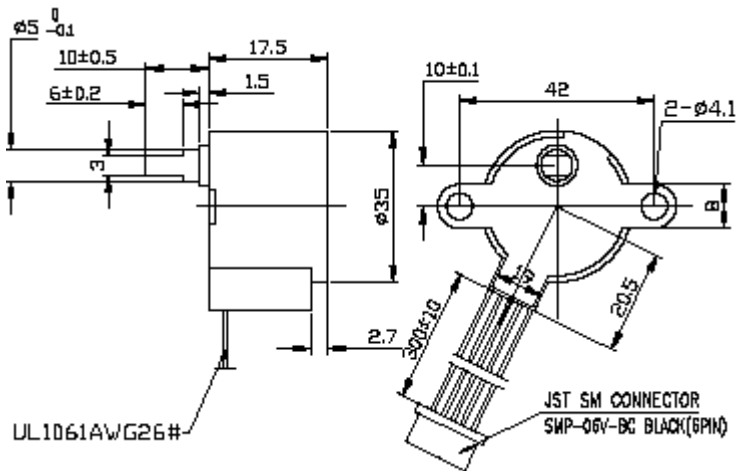




DIMENSIONS GD30BYJ48-12-300



DIMENSIONS GD35BYJ46-12-110



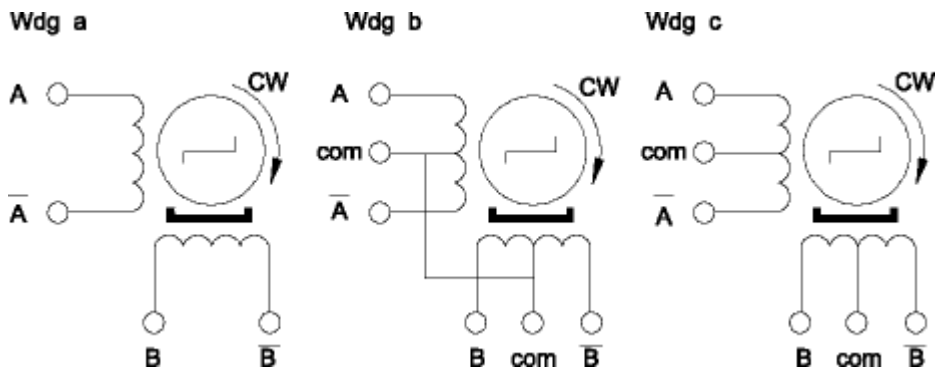


GD15/20/25/35/42/57BYT PM STEPPING MOTORS

PM STEPPING MOTOR SPECIFICATIONS

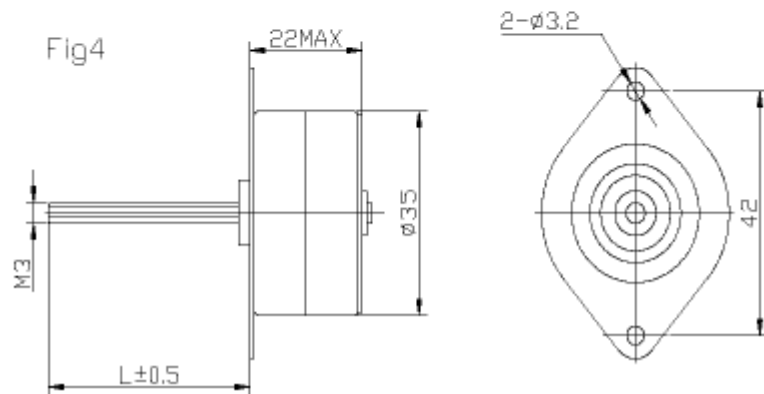
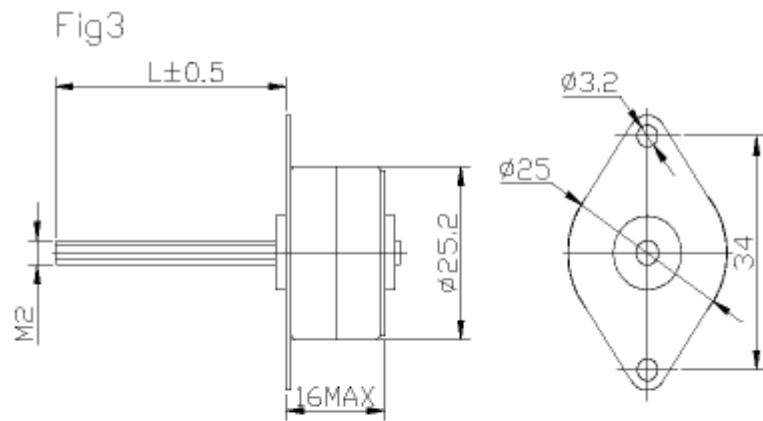
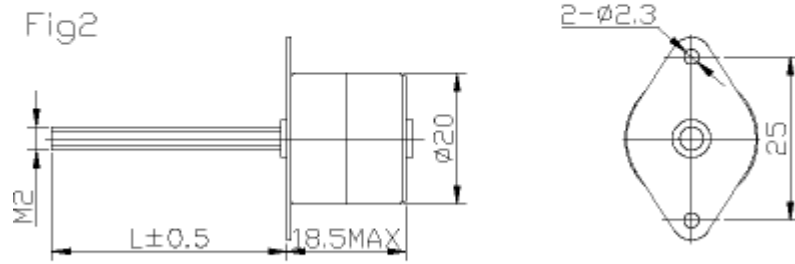
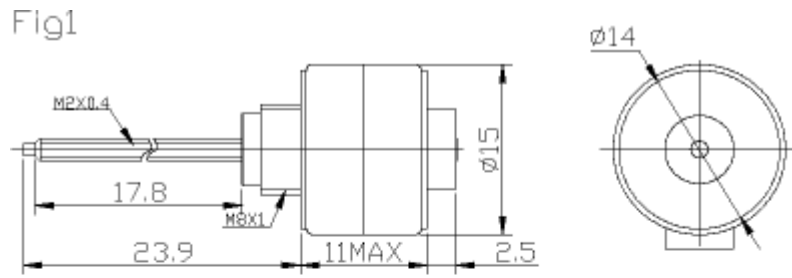
Model	Step angle	No. of phase	Volt.	Cur- rent	Resis- tance	Holding torque	Pull-in Torque	Detent torque	Leads	Wdg	F
	deg		V	A	Ω	g.cm	g.cm	g.cm			
GD15BYT	18	2	12	0.07	170	40	5 (at 500Hz)	16	UL1571 30AWG	a	1
GD20BYT	18	2	5	0.5	10	60	10 (at 200Hz)	20		a.c	2
GD25BYT48	7.5	4	5	0.5	10	120	40 (at 100Hz)	45	UL1061 28AWG	a.b	3
GD258YT24	15	4	9	0.45	20	135	20 (at 200Hz)	60	UL1061 28AWG	a.b	3
GD35BYT48L	7.5	4	12	0.22	60	520	50 (at 200Hz)	125	UL1007 26AWG	b	4
GD35BYT24L	15	4	24	0.28	85	450	110 (at 100Hz)	125	UL1007 26AWG	b	4
GD35BYT48S	7.5	4	5	0.71	7	450	60 (at 200Hz)	75	UL1007 26AWG	b	5
GD42BYT48L	7.5	4	12	0.18	70	500	60 (at 200Hz)	125	UL1007 26AWG	b	6
GD42BYT48S	7.5	4	12	0.3	40	550	70 (at 200Hz)	100	UL1007 26AWG	b	7
GD57BYT48-01	7.5	4	12	0.6	21	1500	320(at 1100Hz)	425	UL1007 26AWG	a.c	8

WIRING DIAGRAM



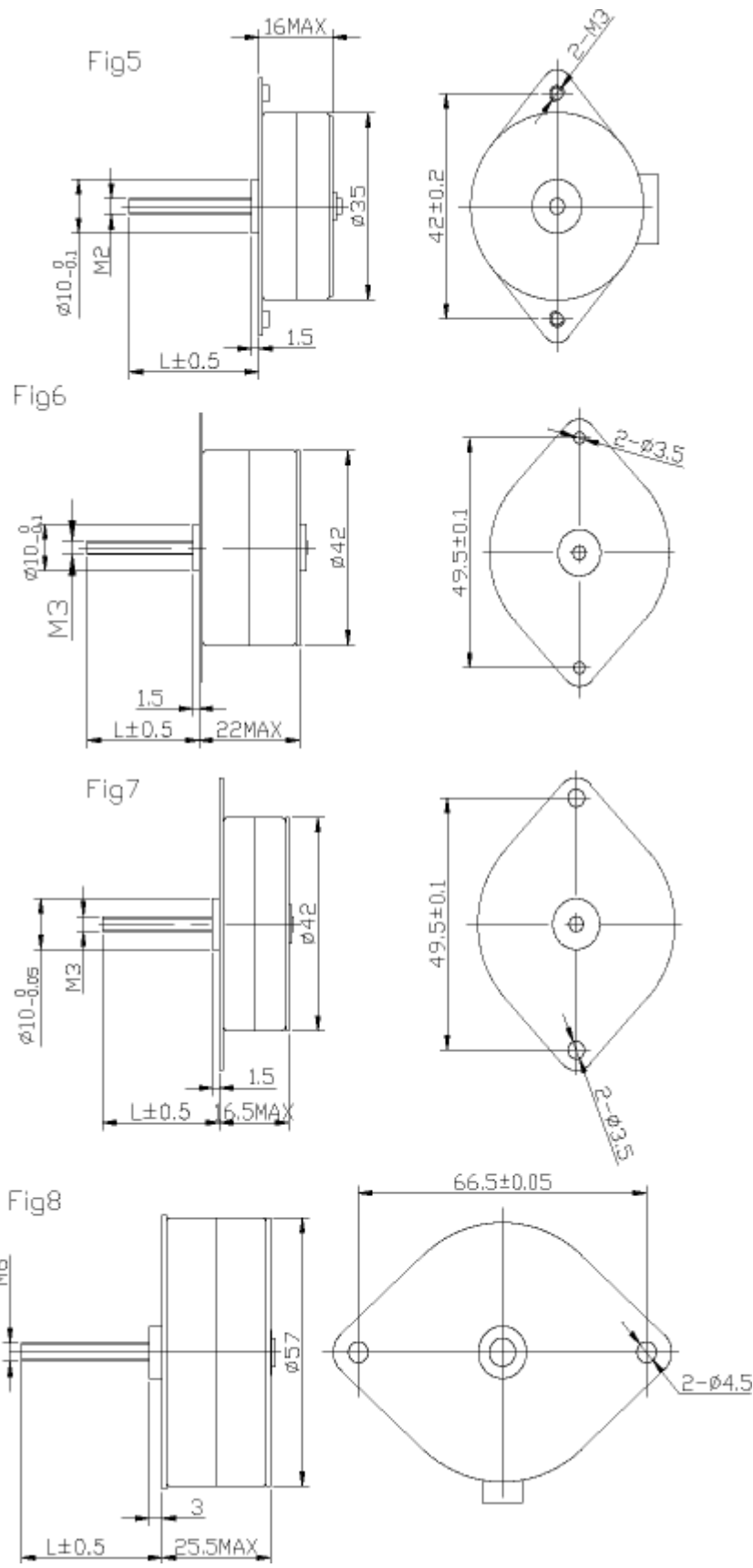


DIMENSIONS





DIMENSIONS



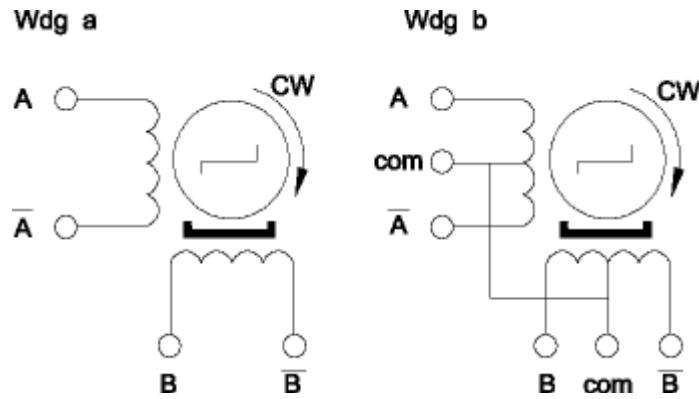


GD25BYZ LINEAR PM STEPPING MOTORS

PM STEPPING MOTOR SPECIFICATIONS

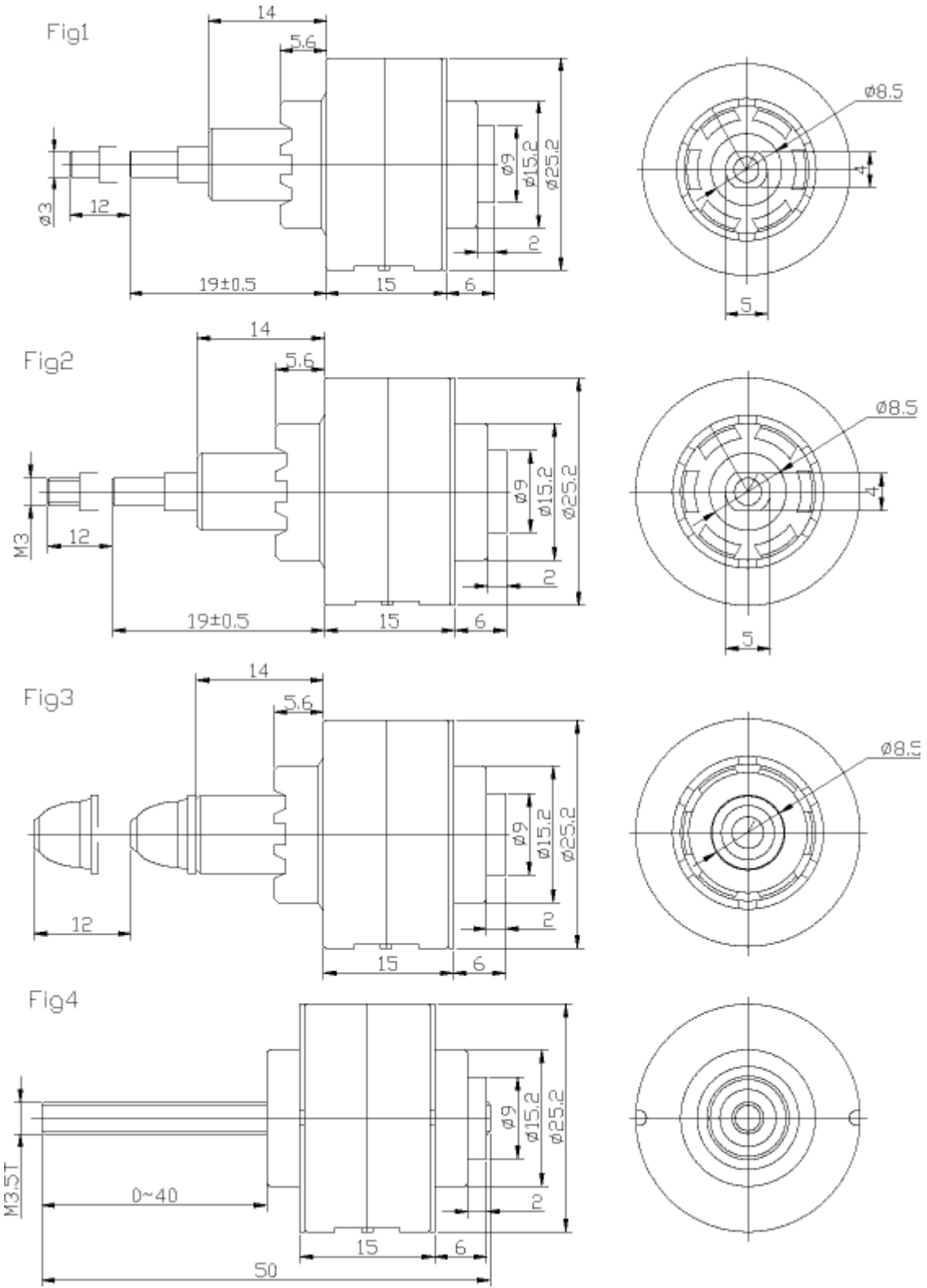
Model	Step angle	No. of phase	Volt.	Cur- rent	Resis- tance	Step Aval.	Push Torque	Jour- ney	Leads	Wdg	F
	deg		V	A	Ω	mm	N	mm			
GD25BYZ-A01	15	2	12	0.23	53	0.0417	25	12	AF-200 AWG28	a	1
GD25BYZ-A02	18	4	12	0.23	53	0.0417	25	12	UL1061 AWG28	b	1
GD25BYZ-A4	15	4	5	0.23	22	0.0417	7	12	UL1061 AWG28	b	1
GD25BYZ-A05	15	2	5	0.53	22	0.0417	10	12	AF-200 AWG28	a	2
GD25BYZ-A01 (09)	15	2	12	0.23	53	0.0417	25	12	AF-200 AWG28	a	3
GD25BYZ-B01	15	2	12	0.23	53	0.0417	25	40	AF-200 AWG28	a	4
GD25BYZ-B02	15	2	6	0.5	12	0.0417	7.5	40	AF-200 AWG28	a	4
GD25BYZ-B03	15	2	12	0.5	24	0.0417	30	40	AF-200 AWG28	a	4
GD25BYZ-B04	15	4	5	0.23	22	0.0417	30	40	UL1061 AWG28	b	4

WIRING DIAGRAM





DIMENSIONS



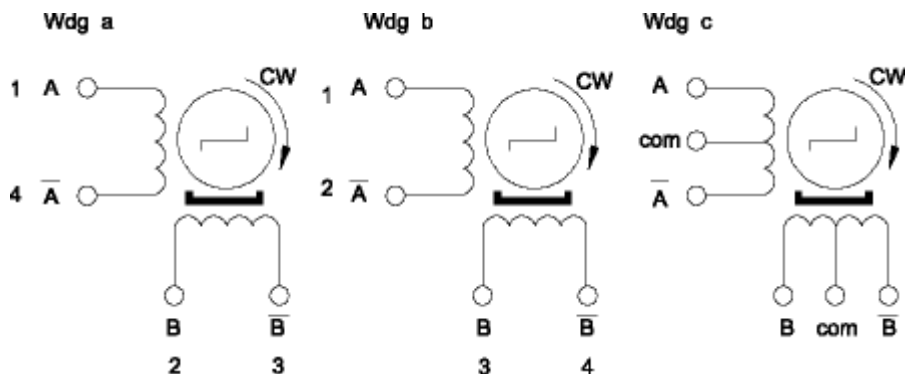


GD35/57BYZ LINEAR PM STEPPING MOTORS

PM STEPPING MOTOR SPECIFICATIONS

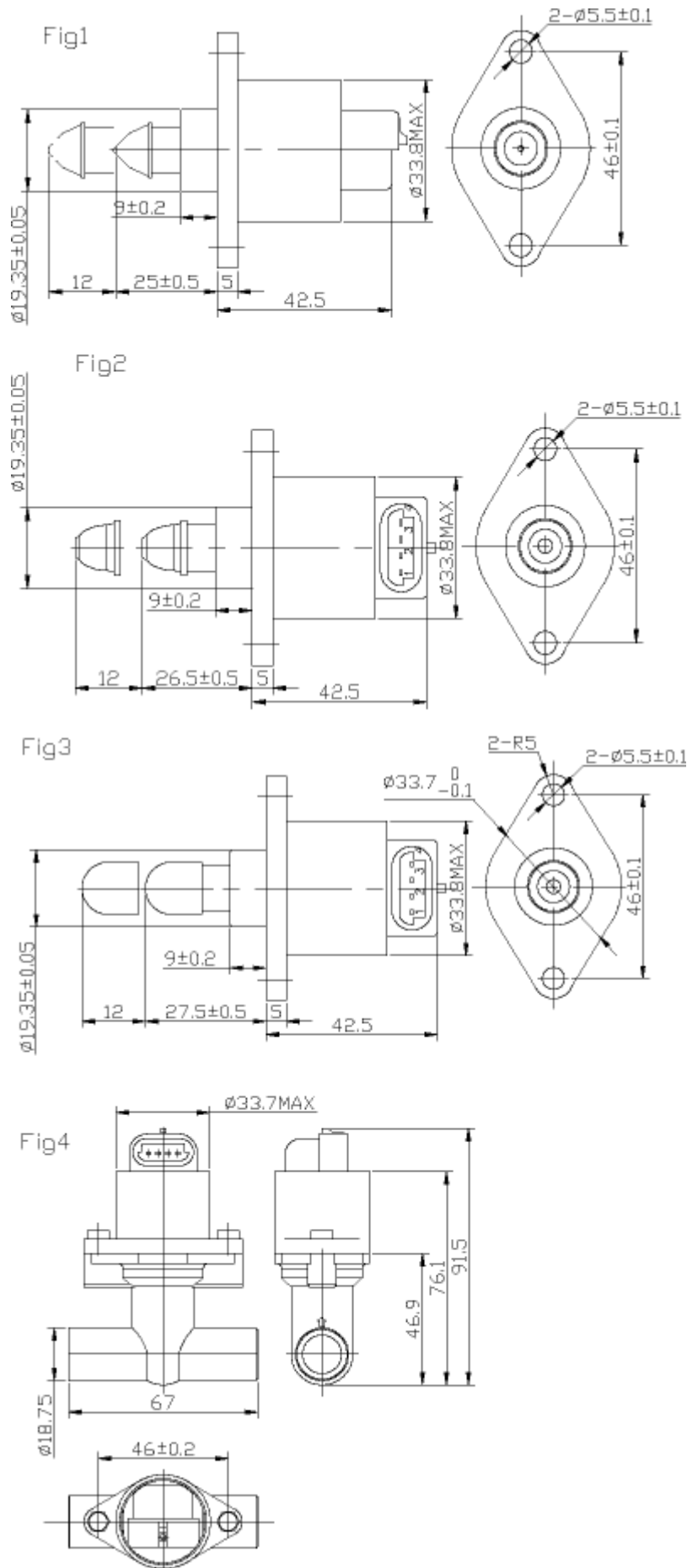
Model	Step angle	No.of phase	Volt.	Cur- rent	Resis- tance	Step Aval.	Push Torque	Jour- ney	Leads	Wdg	F
	deg		V	A	Ω	mm	N	mm			
GD35BY 42Z01A-02	15	2	12	0.23	53	23.4	0.0417	25	12	a	1
GD35BY 42Z01B-09	15	2	12	0.23	53	23.4	0.0417	25	12	a	2
GD35BY 42Z01B-10	15	2	12	0.23	53	23.4	0.0417	25	12	a	3
GD35BY 42Z01B-10T	15	2	12	0.23	53	23.4	0.0417	25	12	a	4
GD35BY 42Z01-01TA	15	2	12	0.23	53	23.4	0,0417	25	12	a	6
GD35BY 42Z01B-01TB	15	2	12	0.23	53	23.4	0.0417	25	12	a	7
GD35BY 42Z02C-08	15	2	12	0.23	53	23.4	0.0417	25	12	b	5
GD57BY Z01-B01	7.5	4	12	0.23	25	29	0.025	31	12	c	8

WIRING DIAGRAM



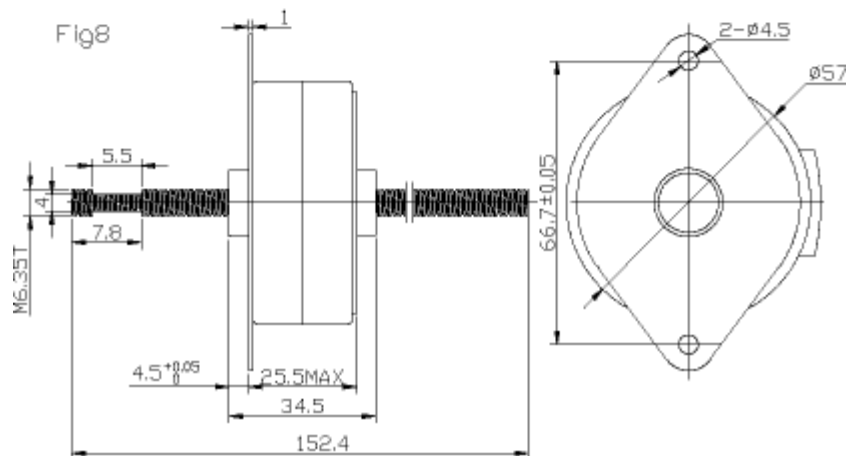
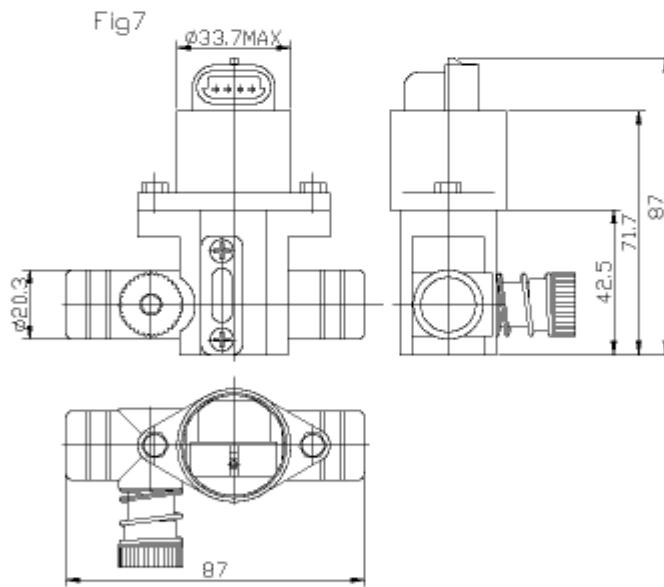
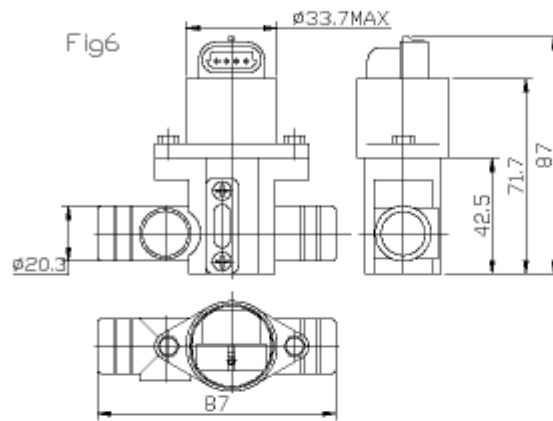
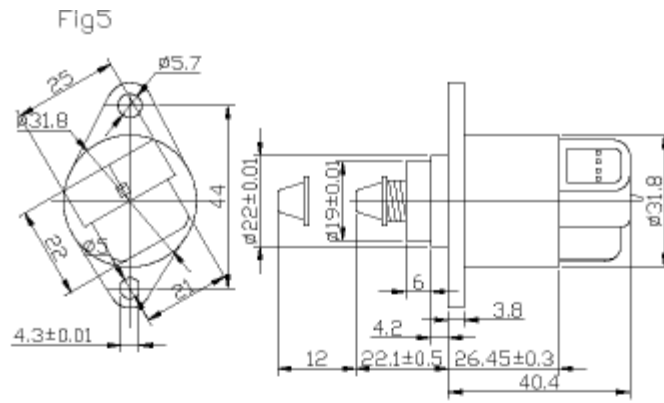


DIMENSIONS





DIMENSIONS





ORDER INFO

For order mailto sale@giden.ru

Office №11, bld.62
6th Radialnaya Str., Moscow, Russia

(TEL) +7 (495) 225-54-52

(FAX) +7 (495) 225-54-52

END OF DOCUMENT (April 2006)
